

JAK2/3 (Phospho-Tyr966/939) Antibody**Cat#: orb771687 (Manual)**

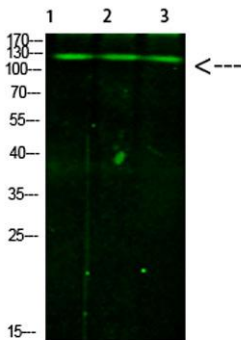
For research use only. Not intended for diagnostic use.

Product Name	JAK2/3 (Phospho-Tyr966/939) Antibody
Host species	Rabbit
Applications	WB;ELISA;IHC
Species Cross-Reactivity	Human:Y966/939;Mouse:Y966/935;Rat:Y966/935
Recommended dilutions	WB 1:500-2000;IHC-p 1:50-300; ELISA 2000-20000
Immunogen	Synthesized Phospho peptide derived from human JAK2/3.at AA range: T966
Specificity	This antibody detects endogenous levels of JAK2/3 (Phospho-Tyr966/939) Antibody at Human:Y966/939;Mouse:Y966/935;Rat:Y966/935, It doesn't react with total protein.
Formulation	Liquid in PBS containing 50% glycerol, 0.5% BSA and 0.02% sodium azide..
Storage	Store at -20°C. Avoid repeated freeze-thaw cycles.
Protein Name	JAK2/3
Gene Name	JAK2 JAK3
Cellular localization	Endomembrane system ; Peripheral membrane protein . Cytoplasm . Nucleus .
Purification	The antibody was affinity-purified from rabbit antiserum by affinity-chromatography using epitope-specific immunogen.
Clonality	Polyclonal

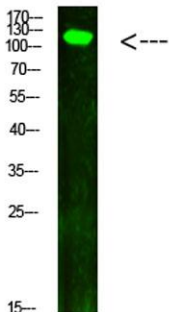
Concentration	1 mg/ml
Observed band	
Human Gene ID	1132/1124
Human Swiss-Prot Number	O60674/P52333
Alternative Names	Tyrosine-protein kinase JAK2/JAK3 (EC 2.7.10.2) (Janus kinase 2/Janus kinase 3) (JAK-2/JAK-3)

Background

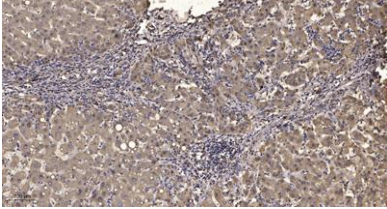
This gene product is a protein tyrosine kinase involved in a specific subset of cytokine receptor signaling pathways. It has been found to be constitutively associated with the prolactin receptor and is required for responses to gamma interferon. Mice that do not express an active protein for this gene exhibit embryonic lethality associated with the absence of definitive erythropoiesis. [provided by RefSeq, Jul 2008],



Western Blot analysis of 1,mouse-liver 2,hela 3,mouse-brain cells using primary antibody diluted at 1:1000(4°C overnight). Secondary antibody:Goat Anti-rabbit IgG IRDye 800(diluted at 1:5000, 25°C, 1 hour)



Western Blot analysis of hela cells using primary antibody diluted at 1:1000(4°C overnight). Secondary antibody:Goat Anti-rabbit IgG IRDye 800(diluted at 1:5000, 25°C, 1 hour)



Immunohistochemical analysis of paraffin-embedded human liver cancer. 1, Antibody was diluted at 1:200(4° overnight). 2, Tris-EDTA,pH9.0 was used for antigen retrieval. 3,Secondary antibody was diluted at 1:200(room temperature, 45min).