

**ATG10 rabbit pAb****Cat#: orb771638 (Manual)**

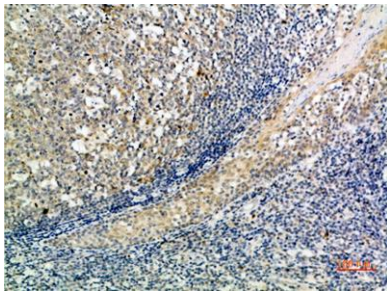
For research use only. Not intended for diagnostic use.

<b>Product Name</b>	ATG10 rabbit pAb
<b>Host species</b>	Rabbit
<b>Applications</b>	IHC;IF;ELISA
<b>Species Cross-Reactivity</b>	Human;Rat;Mouse;
<b>Recommended dilutions</b>	IHC-p 1:50-200, ELISA 1:10000-20000
<b>Immunogen</b>	Synthetic peptide from human protein at AA range: 1-50
<b>Specificity</b>	The antibody detects endogenous ATG10
<b>Formulation</b>	Liquid in PBS containing 50% glycerol, 0.5% BSA and 0.02% sodium azide..
<b>Storage</b>	Store at -20°C. Avoid repeated freeze-thaw cycles.
<b>Protein Name</b>	Ubiquitin-like-conjugating enzyme ATG10 (EC 6.3.2.-) (Autophagy-related protein 10) (APG10-like)
<b>Gene Name</b>	ATG10 APG10L PP12616
<b>Cellular localization</b>	Cytoplasm .
<b>Purification</b>	The antibody was affinity-purified from rabbit antiserum by affinity-chromatography using epitope-specific immunogen.
<b>Clonality</b>	Polyclonal

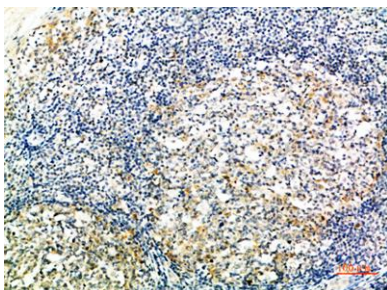
<b>Concentration</b>	1 mg/ml
<b>Observed band</b>	
<b>Human Gene ID</b>	83734
<b>Human Swiss-Prot Number</b>	Q9H0Y0
<b>Alternative Names</b>	Ubiquitin-like-conjugating enzyme ATG10 (EC 6.3.2.-;Autophagy-related protein 10;APG10-like)

## Background

Autophagy is a process for the bulk degradation of cytosolic compartments by lysosomes. ATG10 is an E2-like enzyme involved in 2 ubiquitin-like modifications essential for autophagosome formation: ATG12 (MIM 609608)-ATG5 (MIM 604261) conjugation and modification of a soluble form of MAP-LC3 (MAP1LC3A; MIM 601242), a homolog of yeast Apg8, to a membrane-bound form (Nemoto et al., 2003 [PubMed 12890687]).[supplied by OMIM, Mar 2008],



**Immunohistochemical analysis of paraffin-embedded human-tonsil, antibody was diluted at 1:200**



**Immunohistochemical analysis of paraffin-embedded human-tonsil, antibody was diluted at 1:200**



Explore. Bioreagents.

[www.biorbyt.com](http://www.biorbyt.com)