

**IL-17C rabbit pAb****Cat#: orb771611 (Manual)**

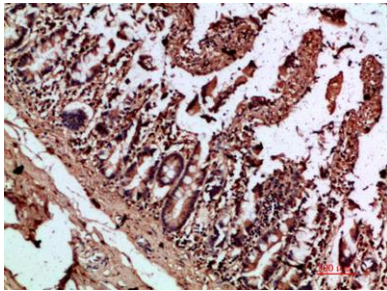
For research use only. Not intended for diagnostic use.

<b>Product Name</b>	IL-17C rabbit pAb
<b>Host species</b>	Rabbit
<b>Applications</b>	IHC;IF;ELISA
<b>Species Cross-Reactivity</b>	Human;Rat;Mouse;
<b>Recommended dilutions</b>	IHC-p 1:50-200, ELISA 1:10000-20000
<b>Immunogen</b>	Synthetic peptide from human protein at AA range: 81-130
<b>Specificity</b>	The antibody detects endogenous IL-17C
<b>Formulation</b>	Liquid in PBS containing 50% glycerol, 0.5% BSA and 0.02% sodium azide..
<b>Storage</b>	Store at -20°C. Avoid repeated freeze-thaw cycles.
<b>Protein Name</b>	Interleukin-17C (IL-17C) (Cytokine CX2)
<b>Gene Name</b>	IL17C UNQ561/PRO1122
<b>Cellular localization</b>	Secreted.
<b>Purification</b>	The antibody was affinity-purified from rabbit antiserum by affinity-chromatography using epitope-specific immunogen.
<b>Clonality</b>	Polyclonal

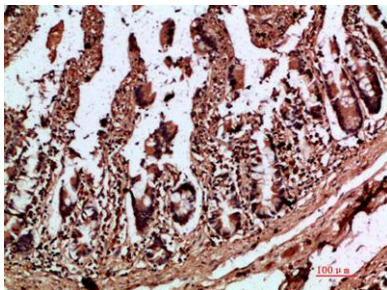
<b>Concentration</b>	1 mg/ml
<b>Observed band</b>	
<b>Human Gene ID</b>	27189
<b>Human Swiss-Prot Number</b>	Q9P0M4
<b>Alternative Names</b>	Interleukin-17C (IL-17C;Cytokine CX2)

## Background

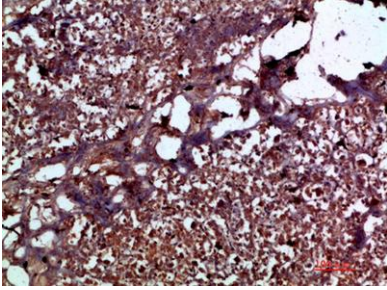
The protein encoded by this gene is a T cell-derived cytokine that shares the sequence similarity with IL17. This cytokine was reported to stimulate the release of tumor necrosis factor alpha and interleukin 1 beta from a monocytic cell line. The expression of this cytokine was found to be restricted to activated T cells. [provided by RefSeq, Jul 2008],



**Immunohistochemical analysis of paraffin-embedded human-colon, antibody was diluted at 1:200**



**Immunohistochemical analysis of paraffin-embedded human-colon, antibody was diluted at 1:200**



**Immunohistochemical analysis of paraffin-embedded human-pancreas, antibody was diluted at 1:200**