

**Eotaxin-2 rabbit pAb****Cat#: orb771591 (Manual)**

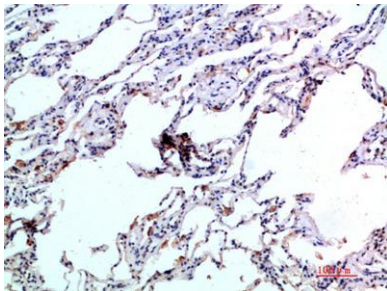
For research use only. Not intended for diagnostic use.

<b>Product Name</b>	Eotaxin-2 rabbit pAb
<b>Host species</b>	Rabbit
<b>Applications</b>	IHC;IF;ELISA
<b>Species Cross-Reactivity</b>	Human;Rat;Mouse;
<b>Recommended dilutions</b>	IHC-p 1:50-200, ELISA 1:10000-20000
<b>Immunogen</b>	Synthetic peptide from human protein at AA range: 61-110
<b>Specificity</b>	The antibody detects endogenous Eotaxin-2
<b>Formulation</b>	Liquid in PBS containing 50% glycerol, 0.5% BSA and 0.02% sodium azide..
<b>Storage</b>	Store at -20°C. Avoid repeated freeze-thaw cycles.
<b>Protein Name</b>	C-C motif chemokine 24 (CK-beta-6) (Eosinophil chemotactic protein 2) (Eotaxin-2) (Myeloid progenitor inhibitory factor 2) (MPlF-2) (Small-inducible cytokine A24)
<b>Gene Name</b>	CCL24 MPIF2 SCYA24
<b>Cellular localization</b>	Secreted .
<b>Purification</b>	The antibody was affinity-purified from rabbit antiserum by affinity-chromatography using epitope-specific immunogen.

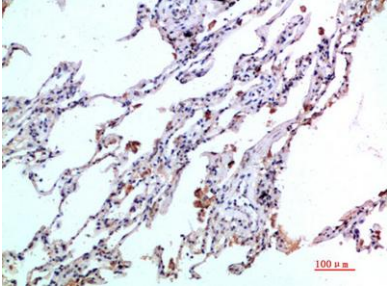
<b>Clonality</b>	Polyclonal
<b>Concentration</b>	1 mg/ml
<b>Observed band</b>	
<b>Human Gene ID</b>	6369
<b>Human Swiss-Prot Number</b>	O00175
<b>Alternative Names</b>	C-C motif chemokine 24 (CK-beta-6;Eosinophil chemotactic protein 2;Eotaxin-2;Myeloid progenitor inhibitory factor 2;MPIF-2;Small-inducible cytokine A24)

**Background**

This gene belongs to the subfamily of small cytokine CC genes. Cytokines are a family of secreted proteins involved in immunoregulatory and inflammatory processes. The CC cytokines are proteins characterized by two adjacent cysteines. The cytokine encoded by this gene displays chemotactic activity on resting T lymphocytes, a minimal activity on neutrophils, and is negative on monocytes and activated T lymphocytes. The protein is also a strong suppressor of colony formation by a multipotential hematopoietic progenitor cell line. [provided by RefSeq, Jul 2008],



**Immunohistochemical analysis of paraffin-embedded human-lung, antibody was diluted at 1:200**



**Immunohistochemical analysis of paraffin-embedded human-lung, antibody was diluted at 1:200**