

**CCL14 rabbit pAb****Cat#: orb771580 (Manual)**

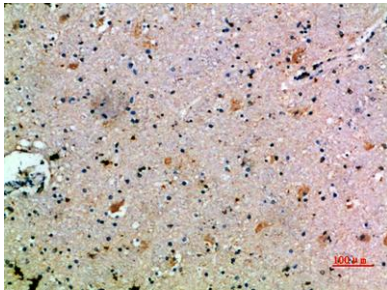
For research use only. Not intended for diagnostic use.

<b>Product Name</b>	CCL14 rabbit pAb
<b>Host species</b>	Rabbit
<b>Applications</b>	IHC;IF;ELISA
<b>Species Cross-Reactivity</b>	Human;Rat;Mouse;
<b>Recommended dilutions</b>	IHC-p 1:50-200, ELISA 1:10000-20000
<b>Immunogen</b>	Synthetic peptide from human protein at AA range: 44-93
<b>Specificity</b>	The antibody detects endogenous CCL14
<b>Formulation</b>	Liquid in PBS containing 50% glycerol, 0.5% BSA and 0.02% sodium azide..
<b>Storage</b>	Store at -20°C. Avoid repeated freeze-thaw cycles.
<b>Protein Name</b>	C-C motif chemokine 14 (Chemokine CC-1/CC-3) (HCC-1/HCC-3) (HCC-1(1-74)) (NCC-2) (Small-inducible cytokine A14) [Cleaved into: HCC-1(3-74); HCC-1(4-74); HCC-1(9-74)]
<b>Gene Name</b>	CCL14 NCC2 SCYA14
<b>Cellular localization</b>	Secreted.
<b>Purification</b>	The antibody was affinity-purified from rabbit antiserum by affinity-chromatography using epitope-specific immunogen.

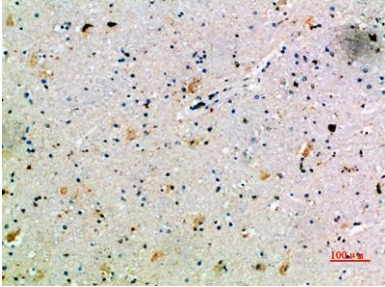
<b>Clonality</b>	Polyclonal
<b>Concentration</b>	1 mg/ml
<b>Observed band</b>	
<b>Human Gene ID</b>	6358
<b>Human Swiss-Prot Number</b>	Q16627
<b>Alternative Names</b>	C-C motif chemokine 14 (Chemokine CC-1/CC-3;HCC-1/HCC-3;HCC-1(1-74);NCC-2;Small-inducible cytokine A14) [Cleaved into: HCC-1(3-74); HCC-1(4-74); HCC-1(9-74)]

**Background**

This gene, chemokine (C-C motif) ligand 14, is one of several CC cytokine genes clustered on 17q11.2. The CC cytokines are secreted proteins characterized by two adjacent cysteines. The cytokine encoded by this gene induces changes in intracellular calcium concentration and enzyme release in monocytes. Multiple transcript variants encoding different isoforms have been found for this gene. Read-through transcripts are also expressed that include exons from the upstream cytokine gene, chemokine (C-C motif) ligand 15, and are represented as GeneID: 348249. [provided by RefSeq, Dec 2009],



**Immunohistochemical analysis of paraffin-embedded human-brain, antibody was diluted at 1:200**



**Immunohistochemical analysis of paraffin-embedded human-brain, antibody was diluted at 1:200**