

**BTN3A1/2/3 rabbit pAb****Cat#: orb771576 (Manual)**

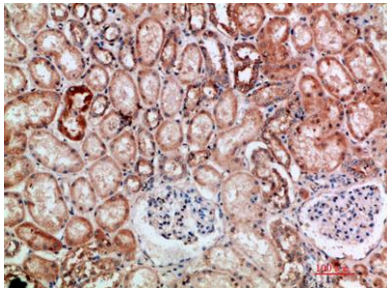
For research use only. Not intended for diagnostic use.

<b>Product Name</b>	BTN3A1/2/3 rabbit pAb
<b>Host species</b>	Rabbit
<b>Applications</b>	IHC;IF;ELISA
<b>Species Cross-Reactivity</b>	Human;Rat;Mouse;
<b>Recommended dilutions</b>	IHC-p 1:50-200, ELISA 1:10000-20000
<b>Immunogen</b>	Synthetic peptide from human protein at AA range: 41-90
<b>Specificity</b>	The antibody detects endogenous BTN3A1/2/3
<b>Formulation</b>	Liquid in PBS containing 50% glycerol, 0.5% BSA and 0.02% sodium azide..
<b>Storage</b>	Store at -20°C. Avoid repeated freeze-thaw cycles.
<b>Protein Name</b>	Butyrophilin subfamily 3 member A1/2/3 (CD antigen CD277)
<b>Gene Name</b>	BTN3A1/2/3 BTF3/4/5
<b>Cellular localization</b>	Cell membrane ; Single-pass type I membrane protein .
<b>Purification</b>	The antibody was affinity-purified from rabbit antiserum by affinity-chromatography using epitope-specific immunogen.
<b>Clonality</b>	Polyclonal

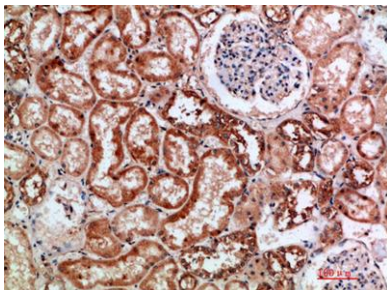
<b>Concentration</b>	1 mg/ml
<b>Observed band</b>	
<b>Human Gene ID</b>	11119
<b>Human Swiss-Prot Number</b>	O00481/P78410/O00478
<b>Alternative Names</b>	

**Background**

The butyrophilin (BTN) genes are a group of major histocompatibility complex (MHC)-associated genes that encode type I membrane proteins with 2 extracellular immunoglobulin (Ig) domains and an intracellular B30.2 (PRYSPRY) domain. Three subfamilies of human BTN genes are located in the MHC class I region: the single-copy BTN1A1 gene (MIM 601610) and the BTN2 (e.g., BTN2A1; MIM 613590) and BTN3 (e.g., BNT3A1) genes, which have undergone tandem duplication, resulting in 3 copies of each (summary by Smith et al., 2010 [PubMed 20208008]).[supplied by OMIM, Nov 2010],



**Immunohistochemical analysis of paraffin-embedded human-kidney, antibody was diluted at 1:200**



**Immunohistochemical analysis of paraffin-embedded human-kidney, antibody was diluted at 1:200**



Explore. Bioreagents.

[www.biorbyt.com](http://www.biorbyt.com)