

RPA14 rabbit pAb**Cat#: orb771487 (Manual)**

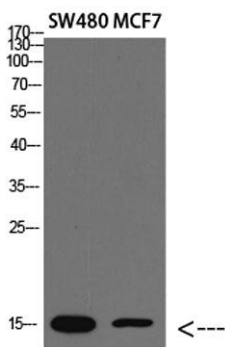
For research use only. Not intended for diagnostic use.

Product Name	RPA14 rabbit pAb
Host species	Rabbit
Applications	WB;IHC
Species Cross-Reactivity	Human;Mouse
Recommended dilutions	WB 1:500-2000;IHC-p 1:50-300
Immunogen	Synthetic peptide from human protein at AA range: 30-80
Specificity	The antibody detects endogenous RPA14
Formulation	Liquid in PBS containing 50% glycerol, 0.5% BSA and 0.02% sodium azide..
Storage	Store at -20°C. Avoid repeated freeze-thaw cycles.
Protein Name	Replication protein A 14 kDa subunit (RP-A p14) (Replication factor A protein 3) (RF-A protein 3)
Gene Name	RPA3 REPA3 RPA14
Cellular localization	Nucleus .
Purification	The antibody was affinity-purified from rabbit antiserum by affinity-chromatography using epitope-specific immunogen.
Clonality	Polyclonal

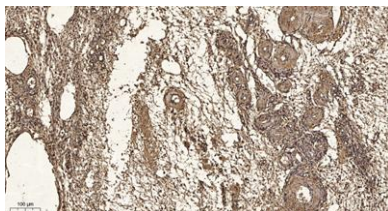
Concentration	1 mg/ml
Observed band	14kD
Human Gene ID	6119
Human Swiss-Prot Number	P35244
Alternative Names	Replication protein A 14 kDa subunit (RP-A p14) (Replication factor A protein 3) (RF-A protein 3)

Background

function:Required for DNA recombination, repair and replication. The activity of RP-A is mediated by single-stranded DNA binding and protein interactions.,subunit:Heterotrimer of 70, 32 and 14 kDa chains. The DNA-binding activity may reside exclusively on the 70 kDa subunit. Interacts with RPA4.,



Western blot analysis of lysate, antibody was diluted at 2000. Secondary antibody(catalog#:RS0002) was diluted at 1:20000



Immunohistochemical analysis of paraffin-embedded human oophoroma. 1, Antibody was diluted at 1:200(4° overnight). 2, Tris-EDTA,pH9.0 was used for antigen retrieval. 3,Secondary antibody was diluted at 1:200(room temperature, 45min).