

NFAT5 rabbit pAb**Cat#: orb771474 (Manual)**

For research use only. Not intended for diagnostic use.

Product Name	NFAT5 rabbit pAb
Host species	Rabbit
Applications	WB;IHC;IF;ELISA
Species Cross-Reactivity	Human;Rat;Mouse
Recommended dilutions	WB 1:500-2000,IHC-p 1:500-200, ELISA 1:10000-20000
Immunogen	Synthetic peptide from human protein at AA range: 212-284
Specificity	The antibody detects endogenous NFAT5
Formulation	Liquid in PBS containing 50% glycerol, 0.5% BSA and 0.02% sodium azide..
Storage	Store at -20°C. Avoid repeated freeze-thaw cycles.
Protein Name	NFAT5
Gene Name	NFAT5 KIAA0827 TONEBP
Cellular localization	Nucleus . Cytoplasm . Nuclear distribution increases under hypertonic conditions. .
Purification	The antibody was affinity-purified from rabbit antiserum by affinity-chromatography using epitope-specific immunogen.
Clonality	Polyclonal

Concentration 1 mg/ml

Observed band

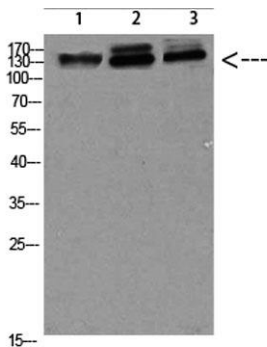
Human Gene ID 10725

Human Swiss-Prot Number O94916

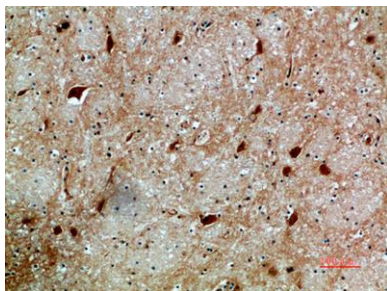
Alternative Names Nuclear factor of activated T-cells 5 (NF-AT5;T-cell transcription factor NFAT5;Tonicity-responsive enhancer-binding protein;TonE-binding protein;TonEBP)

Background

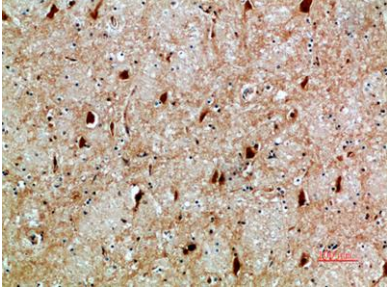
The product of this gene is a member of the nuclear factors of activated T cells family of transcription factors. Proteins belonging to this family play a central role in inducible gene transcription during the immune response. This protein regulates gene expression induced by osmotic stress in mammalian cells. Unlike monomeric members of this protein family, this protein exists as a homodimer and forms stable dimers with DNA elements. Multiple transcript variants encoding different isoforms have been found for this gene. [provided by RefSeq, Jul 2008],



Western blot analysis of 823 293T-UV HELA Cell Lysate, antibody was diluted at 1:1000. Secondary antibody(catalog#:RS0002) was diluted at 1:20000



Immunohistochemical analysis of paraffin-embedded human-brain, antibody was diluted at 1:200



Immunohistochemical analysis of paraffin-embedded human-brain, antibody was diluted at 1:200