

TMPO rabbit pAb**Cat#: orb771423 (Manual)**

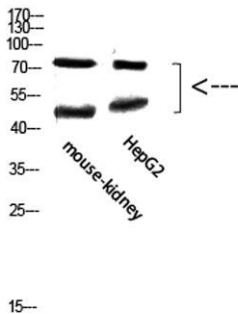
For research use only. Not intended for diagnostic use.

Product Name	TMPO rabbit pAb
Host species	Rabbit
Applications	WB;ELISA
Species Cross-Reactivity	Human;Mouse;Rat
Recommended dilutions	WB 1:500-2000, ELISA 1:10000-20000
Immunogen	Synthetic peptide from human protein at AA range: 1-50
Specificity	The antibody detects endogenous TMPO protein
Formulation	Liquid in PBS containing 50% glycerol, 0.5% BSA and 0.02% sodium azide..
Storage	Store at -20°C. Avoid repeated freeze-thaw cycles.
Protein Name	thymopoietin
Gene Name	TMPO LAP2
Cellular localization	Nucleus. Chromosome. Expressed diffusely throughout the nucleus.
Purification	The antibody was affinity-purified from rabbit antiserum by affinity-chromatography using epitope-specific immunogen.
Clonality	Polyclonal

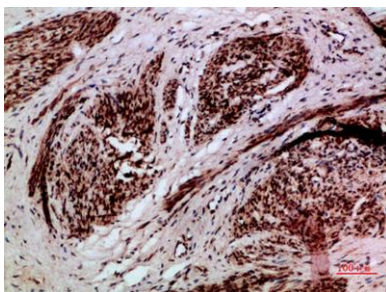
Concentration	1 mg/ml
Observed band	75+50kD
Human Gene ID	7112
Human Swiss-Prot Number	P42166/P42167
Alternative Names	TMPO LAP2

Background

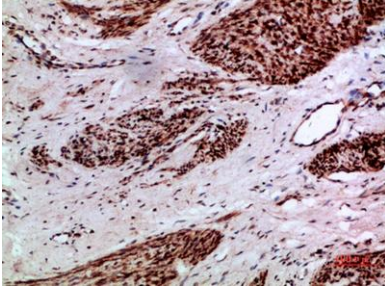
The protein encoded by TMPO (thymopoietin) resides in the nucleus and may play a role in the assembly of the nuclear lamina, and thus help maintain the structural organization of the nuclear envelope. It may function as a receptor for the attachment of lamin filaments to the inner nuclear membrane. Mutations in TMPO are associated with dilated cardiomyopathy. Alternatively spliced transcript variants encoding different isoforms have been noted for TMPO.



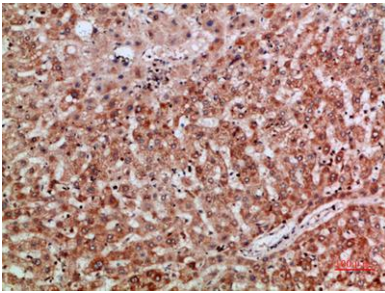
Western Blot analysis of mouse-kidney, hepg2 cells using Antibody diluted at 800. Secondary antibody(catalog#:RS0002) was diluted at 1:20000



Immunohistochemical analysis of paraffin-embedded human-cervical-cancer, antibody was diluted at 1:200



Immunohistochemical analysis of paraffin-embedded human-cervical-cancer, antibody was diluted at 1:200



Immunohistochemical analysis of paraffin-embedded human-liver, antibody was diluted at 1:200