

**MYOZ2 rabbit pAb****Cat#: orb771420 (Manual)**

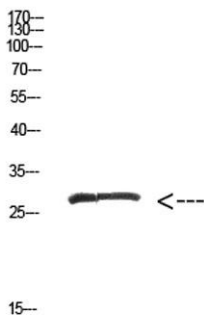
For research use only. Not intended for diagnostic use.

<b>Product Name</b>	MYOZ2 rabbit pAb
<b>Host species</b>	Rabbit
<b>Applications</b>	WB;ELISA;IHC
<b>Species Cross-Reactivity</b>	Human;Mouse;Rat
<b>Recommended dilutions</b>	WB 1:500-2000;IHC-p 1:50-300; ELISA 2000-20000
<b>Immunogen</b>	The antiserum was produced against synthesized peptide derived from the Internal region of human MYOZ2. AA range:21-70
<b>Specificity</b>	The antibody detects endogenous MYOZ2 protein
<b>Formulation</b>	Liquid in PBS containing 50% glycerol, 0.5% BSA and 0.02% sodium azide..
<b>Storage</b>	Store at -20°C. Avoid repeated freeze-thaw cycles.
<b>Protein Name</b>	myozenin 2
<b>Gene Name</b>	MYOZ2 C4orf5
<b>Cellular localization</b>	Cytoplasm, myofibril, sarcomere, Z line . Colocalizes with ACTN1 and PPP3CA at the Z-line of heart and skeletal muscle. .
<b>Purification</b>	The antibody was affinity-purified from rabbit antiserum by affinity-chromatography using epitope-specific immunogen.
<b>Clonality</b>	Polyclonal

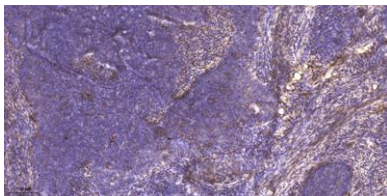
<b>Concentration</b>	1 mg/ml
<b>Observed band</b>	30kD
<b>Human Gene ID</b>	51778
<b>Human Swiss-Prot Number</b>	Q9NPC6
<b>Alternative Names</b>	MYOZ2 C4orf5

**Background**

The protein encoded by this gene belongs to a family of sarcomeric proteins that bind to calcineurin, a phosphatase involved in calcium-dependent signal transduction in diverse cell types. These family members tether calcineurin to alpha-actinin at the z-line of the sarcomere of cardiac and skeletal muscle cells, and thus they are important for calcineurin signaling. Mutations in this gene cause cardiomyopathy familial hypertrophic type 16, a hereditary heart disorder. [provided by RefSeq, Aug 2011],



**Western Blot analysis of hepg2 cells using Antibody diluted at 500. Secondary antibody(catalog#:RS0002) was diluted at 1:20000**



**Immunohistochemical analysis of paraffin-embedded human cervical carcinoma. 1, Antibody was diluted at 1:200(4<sup>o</sup> overnight). 2, Tris-EDTA,pH9.0 was used for antigen retrieval. 3,Secondary antibody was diluted at 1:200(room temperature, 45min).**



Explore. Bioreagents.

[www.biorbyt.com](http://www.biorbyt.com)