

TLE1/2/3/4 rabbit pAb**Cat#: orb771339 (Manual)**

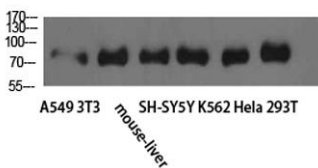
For research use only. Not intended for diagnostic use.

Product Name	TLE1/2/3/4 rabbit pAb
Host species	Rabbit
Applications	WB;ELISA;IHC
Species Cross-Reactivity	Human;Mouse;Rat
Recommended dilutions	WB 1:500-2000;IHC-p 1:50-300; ELISA 2000-20000
Immunogen	The antiserum was produced against synthesized peptide derived from the C-terminal region of human TLE1/TLE2/TLE3/TLE4. AA range:721-770
Specificity	TLE1/2/3/4 Polyclonal Antibody detects endogenous levels of TLE1/2/3/4
Formulation	Liquid in PBS containing 50% glycerol, 0.5% BSA and 0.02% sodium azide..
Storage	Store at -20°C. Avoid repeated freeze-thaw cycles.
Protein Name	TLE1/2/3/4
Gene Name	
Cellular localization	Nucleus . Nuclear and chromatin-associated, depending on isoforms and phosphorylation status. Hyperphosphorylation decreases the affinity for nuclear components.
Purification	The antibody was affinity-purified from rabbit antiserum by affinity-chromatography using epitope-specific immunogen.

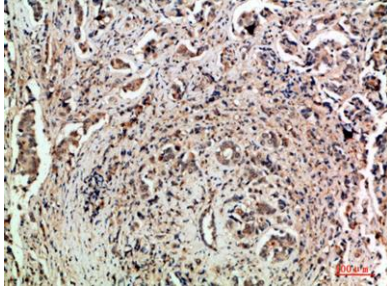
Clonality	Polyclonal
Concentration	1 mg/ml
Observed band	90kD
Human Gene ID	7088
Human Swiss-Prot Number	Q04724/Q04725/Q04726/Q04727
Alternative Names	similar to transducin-like enhancer of split 1/2/3/4

Background

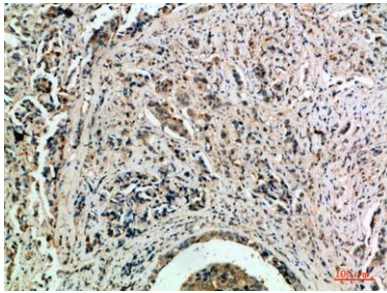
function:Transcriptional corepressor that binds to a number of transcription factors. Inhibits NF-kappa-B-regulated gene expression. Inhibits the transcriptional activation mediated by FOXA2, and by CTNNB1 and TCF family members in Wnt signaling. The effects of full-length TLE family members may be modulated by association with dominant-negative AES. Unusual function as coactivator for ESRRG.,PTM:Phosphorylated, probably by CDC2. The degree of phosphorylation varies throughout the cell cycle, and is highest at the G2/M transition. Becomes hyperphosphorylated in response to cell differentiation and interaction with HES1 or RUNX1.,similarity:Belongs to the WD repeat Groucho/TLE family.,similarity:Contains 6 WD repeats.,subcellular location:Nuclear and chromatin-associated, depending on isoforms and phosphorylation status. Hyperphosphorylation decreases the affinity for nuclear components.,subunit:Homooligomer and heterooligomer with other family members. Binds LEF1, RUNX1, RUNX3, FOXA2, KDM6A, UTY, histone H3, HESX1, ESRRG and the NF-kappa-B subunit RELA. Interacts with HES1 (via WRPW motif).,tissue specificity:In all tissues examined, mostly in brain, liver and muscle.,



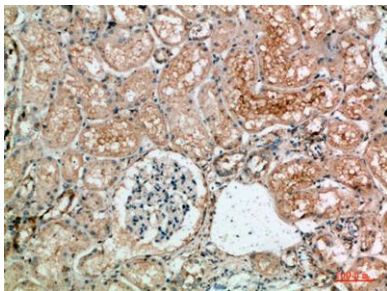
Western Blot analysis of A549 3T3 mouse-liver SH-SY5Y K562 HeLa 293T cells using TLE1/2/3/4 Polyclonal Antibody diluted at 1:2000. Secondary antibody(catalog#:RS0002) was diluted at 1:20000



Immunohistochemical analysis of paraffin-embedded human-breast-cancer, antibody was diluted at 1:200



Immunohistochemical analysis of paraffin-embedded human-breast-cancer, antibody was diluted at 1:200



Immunohistochemical analysis of paraffin-embedded human-kidney, antibody was diluted at 1:200