

**E2F-3 (Acetyl Lys168) rabbit pAb****Cat#: orb771322 (Manual)**

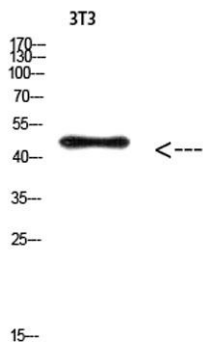
For research use only. Not intended for diagnostic use.

<b>Product Name</b>	E2F-3 (Acetyl Lys168) rabbit pAb
<b>Host species</b>	Rabbit
<b>Applications</b>	WB;ELISA
<b>Species Cross-Reactivity</b>	Human:K168;Mouse:K160;Rat:K161
<b>Recommended dilutions</b>	WB: 1:500-10000 ELISA: 1:10000
<b>Immunogen</b>	Synthesized acetyl-peptide from human protein at AA range: 130-200
<b>Specificity</b>	This antibody detects endogenous levels of E2F-3 at Human:K168;Mouse:K160;Rat:K161, It doesn't react with total protein.
<b>Formulation</b>	PBS, pH 7.4, containing 0.02% sodium azide as Preservative and 50% Glycerol..
<b>Storage</b>	Store at -20°C. Avoid repeated freeze-thaw cycles.
<b>Protein Name</b>	E2F transcription factor 3
<b>Gene Name</b>	E2F3 KIAA0075
<b>Cellular localization</b>	Nucleus.
<b>Purification</b>	The antibody was affinity-purified from rabbit antiserum by affinity-chromatography using epitope-specific immunogen.
<b>Clonality</b>	Polyclonal

<b>Concentration</b>	1 mg/ml
<b>Observed band</b>	50kD
<b>Human Gene ID</b>	1871
<b>Human Swiss-Prot Number</b>	O00716
<b>Alternative Names</b>	E2F3 KIAA0075

**Background**

This gene encodes a member of a small family of transcription factors that function through binding of DP interaction partner proteins. The encoded protein recognizes a specific sequence motif in DNA and interacts directly with the retinoblastoma protein (pRB) to regulate the expression of genes involved in the cell cycle. Altered copy number and activity of this gene have been observed in a number of human cancers. There are pseudogenes for this gene on chromosomes 2 and 17. Alternative splicing results in multiple transcript variants. [provided by RefSeq, Mar 2013],



**Western Blot analysis of 3T3 cells using Antibody diluted at 500. Secondary antibody(catalog#:RS0002) was diluted at 1:20000**