

Synapsin-1 (phospho Ser553) rabbit pAb**Cat#: orb771314 (Manual)**

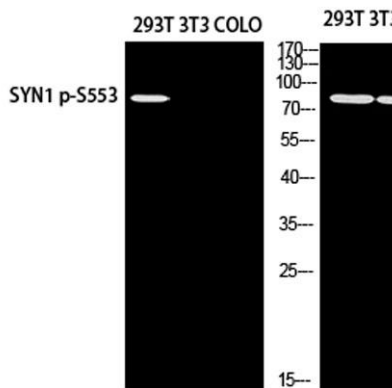
For research use only. Not intended for diagnostic use.

Product Name	Synapsin-1 (phospho Ser553) rabbit pAb
Host species	Rabbit
Applications	WB;IHC
Species Cross-Reactivity	Human;Mouse;Rat
Recommended dilutions	WB 1:500-2000;IHC-p 1:50-300
Immunogen	Synthesized phospho-peptide around the phosphorylation site of human Synapsin-1 (phospho Ser553)
Specificity	Phospho-Synapsin-1 (S553) Polyclonal Antibody detects endogenous levels of Synapsin-1 around the phosphorylation site of S553 protein.
Formulation	Liquid in PBS containing 50% glycerol, 0.5% BSA and 0.02% sodium azide..
Storage	Store at -20°C. Avoid repeated freeze-thaw cycles.
Protein Name	Synapsin-1
Gene Name	SYN1
Cellular localization	Cell junction, synapse. Golgi apparatus .
Purification	The antibody was affinity-purified from rabbit antiserum by affinity-chromatography using epitope-specific immunogen.
Clonality	Polyclonal

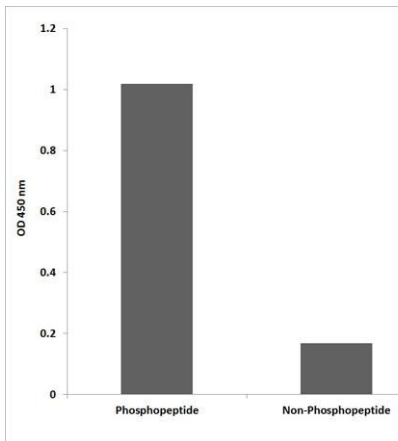
Concentration	1 mg/ml
Observed band	75kD
Human Gene ID	6853
Human Swiss-Prot Number	P17600
Alternative Names	SYN1; Synapsin-1; Brain protein 4.1; Synapsin I

Background

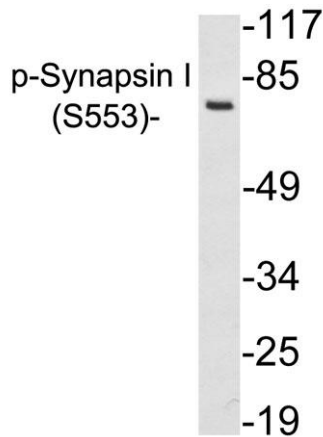
This gene is a member of the synapsin gene family. Synapsins encode neuronal phosphoproteins which associate with the cytoplasmic surface of synaptic vesicles. Family members are characterized by common protein domains, and they are implicated in synaptogenesis and the modulation of neurotransmitter release, suggesting a potential role in several neuropsychiatric diseases. This member of the synapsin family plays a role in regulation of axonogenesis and synaptogenesis. The protein encoded serves as a substrate for several different protein kinases and phosphorylation may function in the regulation of this protein in the nerve terminal. Mutations in this gene may be associated with X-linked disorders with primary neuronal degeneration such as Rett syndrome. Alternatively spliced transcript variants encoding different isoforms have been identified. [provided by RefSeq, Jul 2008],



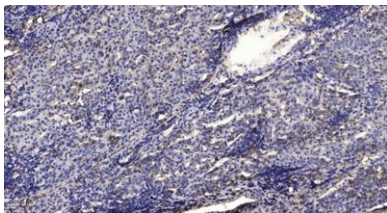
Western blot analysis of 293T using SYN1 p-S553 antibody. Antibody was diluted at 1:500



Enzyme-Linked Immunosorbent Assay (Phospho-ELISA) for Immunogen Phosphopeptide (Phospho-left) and Non-Phosphopeptide (Phospho-right), using Synapsin I (Phospho-Ser553) Antibody



Western blot analysis of lysates from 293 cells treated with PMA, using p-Synapsin I (Phospho-Ser553) antibody.



Immunohistochemical analysis of paraffin-embedded human liver cancer. 1, Antibody was diluted at 1:200(4° overnight). 2, Tris-EDTA,pH9.0 was used for antigen retrieval. 3,Secondary antibody was diluted at 1:200(room temperature, 45min).