

**FOG-2 rabbit pAb****Cat#: orb771285 (Manual)**

For research use only. Not intended for diagnostic use.

<b>Product Name</b>	FOG-2 rabbit pAb
<b>Host species</b>	Rabbit
<b>Applications</b>	WB;IHC;IF;ELISA
<b>Species Cross-Reactivity</b>	Human;Mouse
<b>Recommended dilutions</b>	Western Blot: 1/500 - 1/2000. IHC-p: 1:100-1:300. ELISA: 1/10000. Not yet tested in other applications.
<b>Immunogen</b>	The antiserum was produced against synthesized peptide derived from the Internal region of human ZFPM2. AA range:921-970
<b>Specificity</b>	FOG-2 Polyclonal Antibody detects endogenous levels of FOG-2 protein.
<b>Formulation</b>	Liquid in PBS containing 50% glycerol, 0.5% BSA and 0.02% sodium azide..
<b>Storage</b>	Store at -20°C. Avoid repeated freeze-thaw cycles.
<b>Protein Name</b>	Zinc finger protein ZFPM2
<b>Gene Name</b>	ZFPM2
<b>Cellular localization</b>	Nucleus .
<b>Purification</b>	The antibody was affinity-purified from rabbit antiserum by affinity-chromatography using epitope-specific immunogen.
<b>Clonality</b>	Polyclonal

Explore. Bioreagents.

**Concentration** 1 mg/ml

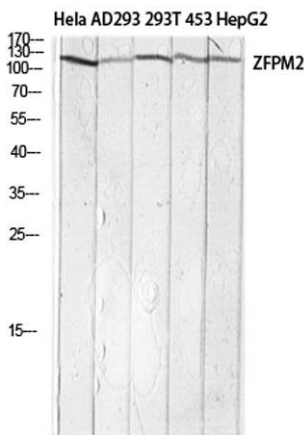
**Observed band** 128kD

**Human Gene ID** 23414

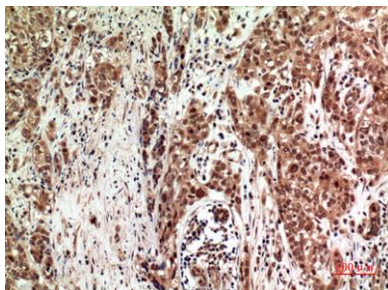
**Human Swiss-Prot Number** Q8WW38

**Alternative Names** ZFPM2; FOG2; ZNF89B; Zinc finger protein ZFPM2; Friend of GATA protein 2; FOG-2; Friend of GATA 2; hFOG-2; Zinc finger protein 89B; Zinc finger protein multitype 2

**Background** zinc finger protein, FOG family member 2(ZFPM2) Homo sapiens The zinc finger protein encoded by this gene is a widely expressed member of the FOG family of transcription factors. The family members modulate the activity of GATA family proteins, which are important regulators of hematopoiesis and cardiogenesis in mammals. It has been demonstrated that the protein can both activate and down-regulate expression of GATA-target genes, suggesting different modulation in different promoter contexts. A related mRNA suggests an alternatively spliced product but this information is not yet fully supported by the sequence. [provided by RefSeq, Jul 2008],



**Western blot analysis of HeLa AD293 293T 453 HepG2 lysis using ZFPM2 antibody. Antibody was diluted at 1:1000. Secondary antibody(catalog#:RS0002) was diluted at 1:20000**



**Immunohistochemical analysis of paraffin-embedded human-breast-cancer, antibody was diluted at 1:100**



Explore. Bioreagents.

[www.biorbyt.com](http://www.biorbyt.com)