

**IL-1F10 rabbit pAb****Cat#: orb771279 (Manual)**

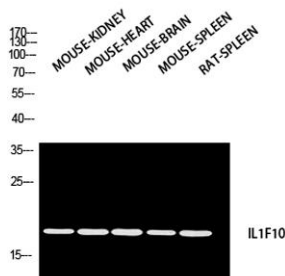
For research use only. Not intended for diagnostic use.

<b>Product Name</b>	IL-1F10 rabbit pAb
<b>Host species</b>	Rabbit
<b>Applications</b>	WB;IHC;IF;ELISA
<b>Species Cross-Reactivity</b>	Human;Rat;Mouse;
<b>Recommended dilutions</b>	Western Blot: 1/500 - 1/2000. IHC-p: 1:100-1:300. ELISA: 1/10000. Not yet tested in other applications.
<b>Immunogen</b>	Synthesized peptide derived from Interleukin-1 family member 10 at AA range: 101-150
<b>Specificity</b>	IL-1F10 Polyclonal Antibody detects endogenous levels of IL-1F10 protein.
<b>Formulation</b>	Liquid in PBS containing 50% glycerol, 0.5% BSA and 0.02% sodium azide..
<b>Storage</b>	Store at -20°C. Avoid repeated freeze-thaw cycles.
<b>Protein Name</b>	Interleukin-1 family member 10
<b>Gene Name</b>	IL1F10
<b>Cellular localization</b>	Cytoplasm . Secreted . The secretion is dependent on protein unfolding and facilitated by the cargo receptor TMED10; it results in protein translocation from the cytoplasm into the ERGIC (endoplasmic reticulum-Golgi intermediate compartment) followed by v
<b>Purification</b>	The antibody was affinity-purified from rabbit antiserum by affinity-chromatography using epitope-specific immunogen.

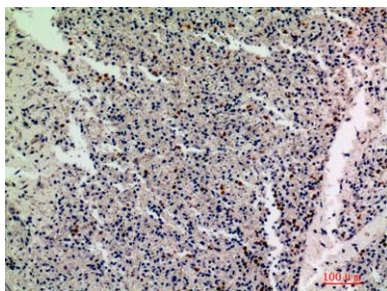
<b>Clonality</b>	Polyclonal
<b>Concentration</b>	1 mg/ml
<b>Observed band</b>	17kD
<b>Human Gene ID</b>	84639
<b>Human Swiss-Prot Number</b>	Q8WWZ1
<b>Alternative Names</b>	IL1F10; FIL1T; IL1HY2; FKSG75; Interleukin-1 family member 10; IL-1F10; FIL1 theta; Interleukin-1 HY2; IL-1HY2; Interleukin-1 theta; IL-1 theta

**Background**

The protein encoded by this gene is a member of the interleukin 1 cytokine family. This gene and eight other interleukin 1 family genes form a cytokine gene cluster on chromosome 2. This cytokine is thought to participate in a network of interleukin 1 family members to regulate adapted and innate immune responses. Two alternatively spliced transcript variants encoding the same protein have been reported. [provided by RefSeq, Jul 2008],



**Western blot analysis of MOUSE-KIDNEY MOUSE-HEART MOUSE-BRAIN MOUSE-SPLEEN RAT-SPLEEN using IL1F10 antibody. Antibody was diluted at 1:2000. Secondary antibody(catalog#:RS0002) was diluted at 1:20000**



**Immunohistochemical analysis of paraffin-embedded human-spleen, antibody was diluted at 1:200**



Explore. Bioreagents.

[www.biorbyt.com](http://www.biorbyt.com)