

CTACK rabbit pAb**Cat#: orb771278 (Manual)**

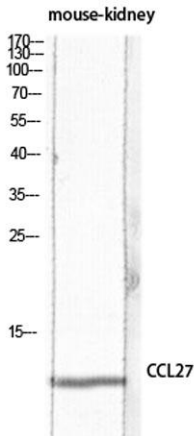
For research use only. Not intended for diagnostic use.

Product Name	CTACK rabbit pAb
Host species	Rabbit
Applications	WB;IHC;IF;ELISA
Species Cross-Reactivity	Human;Rat;Mouse;
Recommended dilutions	Western Blot: 1/500 - 1/2000. IHC-p: 1:100-1:300. ELISA: 1/10000. Not yet tested in other applications.
Immunogen	Synthesized peptide derived from C-C motif chemokine 27 at AA range: 51-100
Specificity	CTACK Polyclonal Antibody detects endogenous levels of CTACK protein.
Formulation	Liquid in PBS containing 50% glycerol, 0.5% BSA and 0.02% sodium azide..
Storage	Store at -20°C. Avoid repeated freeze-thaw cycles.
Protein Name	C-C motif chemokine 27
Gene Name	CCL27
Cellular localization	Secreted .
Purification	The antibody was affinity-purified from rabbit antiserum by affinity-chromatography using epitope-specific immunogen.
Clonality	Polyclonal

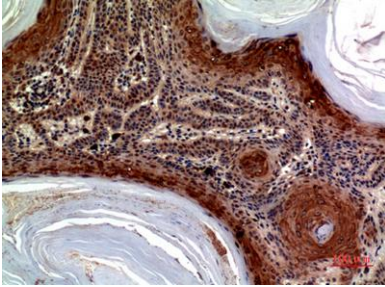
Concentration	1 mg/ml
Observed band	12kD
Human Gene ID	10850
Human Swiss-Prot Number	Q9Y4X3
Alternative Names	CCL27; ILC; SCYA27; C-C motif chemokine 27; CC chemokine ILC; Cutaneous T-cell-attracting chemokine; CTACK; ESkin; IL-11 R-alpha-locus chemokine; Skinkine; Small-inducible cytokine A27

Background

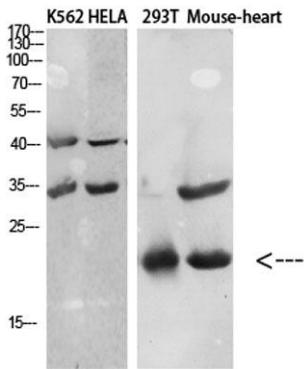
This gene is one of several CC cytokine genes clustered on the p-arm of chromosome 9. Cytokines are a family of secreted proteins involved in immunoregulatory and inflammatory processes. The CC cytokines are proteins characterized by two adjacent cysteines. The protein encoded by this gene is chemotactic for skin-associated memory T lymphocytes. This cytokine may also play a role in mediating homing of lymphocytes to cutaneous sites. It specifically binds to chemokine receptor 10 (CCR10). Studies of a similar murine protein indicate that these protein-receptor interactions have a pivotal role in T cell-mediated skin inflammation. [provided by RefSeq, Sep 2014],



Western blot analysis of mouse-kidney lysis using CCL27 antibody. Antibody was diluted at 1:1000. Secondary antibody(catalog#:RS0002) was diluted at 1:20000



Immunohistochemical analysis of paraffin-embedded human-skin, antibody was diluted at 1:100



Western Blot analysis of various cells using Antibody diluted at 1:1000. Secondary antibody(catalog#:RS0002) was diluted at 1:20000