

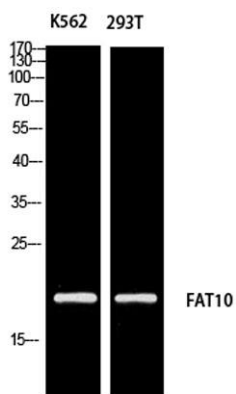
FAT10 rabbit pAb**Cat#: orb771235 (Manual)**

For research use only. Not intended for diagnostic use.

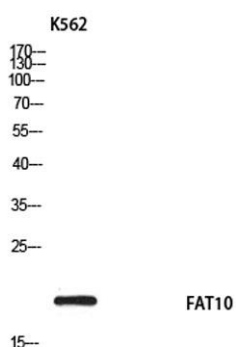
Product Name	FAT10 rabbit pAb
Host species	Rabbit
Applications	WB;ELISA
Species Cross-Reactivity	Human;Rat;Mouse;
Recommended dilutions	Western Blot: 1/500 - 1/2000. ELISA: 1/10000. Not yet tested in other applications.
Immunogen	Synthesized peptide derived from the Internal region of human FAT10.
Specificity	FAT10 Polyclonal Antibody detects endogenous levels of FAT10 protein.
Formulation	Liquid in PBS containing 50% glycerol, 0.5% BSA and 0.02% sodium azide..
Storage	Store at -20°C. Avoid repeated freeze-thaw cycles.
Protein Name	Ubiquitin D
Gene Name	UBD
Cellular localization	Nucleus . Cytoplasm . Accumulates in aggresomes under proteasome inhibition conditions.
Purification	The antibody was affinity-purified from rabbit antiserum by affinity-chromatography using epitope-specific immunogen.
Clonality	Polyclonal

Concentration	1 mg/ml
Observed band	18kD
Human Gene ID	10537
Human Swiss-Prot Number	O15205
Alternative Names	UBD; FAT10; Ubiquitin D; Diubiquitin; Ubiquitin-like protein FAT10

Background similarity:Contains 2 ubiquitin-like domains.,subunit:Interacts with MAD2.,



Western blot analysis of K562 293T using FAT10 antibody. Antibody was diluted at 1:1000. Secondary antibody(catalog#:RS0002) was diluted at 1:20000



Western blot analysis of K562 using FAT10 antibody. Antibody was diluted at 1:1000. Secondary antibody(catalog#:RS0002) was diluted at 1:20000