

Cdc25C (phospho Thr48) rabbit pAb**Cat#: orb771018 (Manual)**

For research use only. Not intended for diagnostic use.

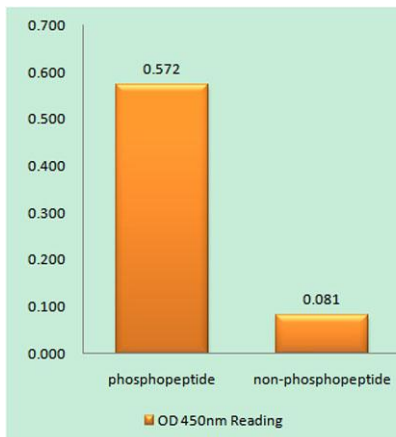
Product Name	Cdc25C (phospho Thr48) rabbit pAb
Host species	Rabbit
Applications	WB;IHC;IF;ELISA
Species Cross-Reactivity	Human;Rat;Mouse;
Recommended dilutions	Western Blot: 1/500 - 1/2000. Immunohistochemistry: 1/100 - 1/300. ELISA: 1/5000. Not yet tested in other applications.
Immunogen	The antiserum was produced against synthesized peptide derived from human CDC25C around the phosphorylation site of Thr48. AA range:14-63
Specificity	Phospho-Cdc25C (T48) Polyclonal Antibody detects endogenous levels of Cdc25C protein only when phosphorylated at T48.
Formulation	Liquid in PBS containing 50% glycerol, 0.5% BSA and 0.02% sodium azide..
Storage	Store at -20°C. Avoid repeated freeze-thaw cycles.
Protein Name	M-phase inducer phosphatase 3
Gene Name	CDC25C
Cellular localization	Nucleus .
Purification	The antibody was affinity-purified from rabbit antiserum by affinity-chromatography using epitope-specific immunogen.
Clonality	Polyclonal

Explore. Bioreagents.

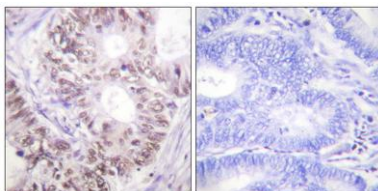
Concentration	1 mg/ml
Observed band	80kD
Human Gene ID	995
Human Swiss-Prot Number	P30307
Alternative Names	CDC25C; M-phase inducer phosphatase 3; Dual specificity phosphatase Cdc25C

Background

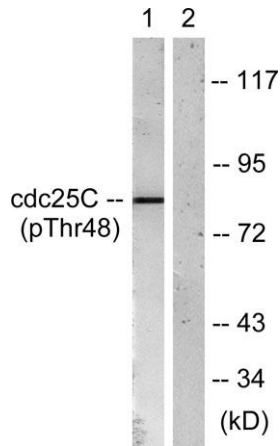
cell division cycle 25C(CDC25C) Homo sapiens This gene encodes a conserved protein that plays a key role in the regulation of cell division. The encoded protein directs dephosphorylation of cyclin B-bound CDC2 and triggers entry into mitosis. It also suppresses p53-induced growth arrest. Multiple alternatively spliced transcript variants of this gene have been described. [provided by RefSeq, Dec 2015],



Enzyme-Linked Immunosorbent Assay (Phospho-ELISA) for Immunogen Phosphopeptide (Phospho-left) and Non-Phosphopeptide (Phospho-right), using CDC25C (Phospho-Thr48) Antibody



Immunohistochemistry analysis of paraffin-embedded human colon carcinoma, using CDC25C (Phospho-Thr48) Antibody. The picture on the right is blocked with the phospho peptide.



Western blot analysis of lysates from RAW264.7 cells, using CDC25C (Phospho-Thr48) Antibody. The lane on the right is blocked with the phospho peptide.