

OSR1 rabbit pAb**Cat#: orb771016 (Manual)**

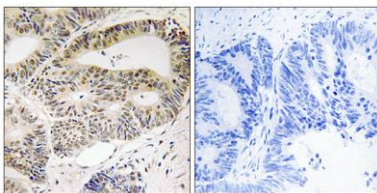
For research use only. Not intended for diagnostic use.

| | |
|---------------------------------|---|
| Product Name | OSR1 rabbit pAb |
| Host species | Rabbit |
| Applications | IHC;IF;ELISA |
| Species Cross-Reactivity | Human;Mouse |
| Recommended dilutions | Immunohistochemistry: 1/100 - 1/300. ELISA: 1/5000. Not yet tested in other applications. |
| Immunogen | The antiserum was produced against synthesized peptide derived from human OSR1. AA range:151-200 |
| Specificity | OSR1 Polyclonal Antibody detects endogenous levels of OSR1 protein. |
| Formulation | Liquid in PBS containing 50% glycerol, 0.5% BSA and 0.02% sodium azide.. |
| Storage | Store at -20°C. Avoid repeated freeze-thaw cycles. |
| Protein Name | Serine/threonine-protein kinase OSR1 |
| Gene Name | OXR1 |
| Cellular localization | Cytoplasm . |
| Purification | The antibody was affinity-purified from rabbit antiserum by affinity-chromatography using epitope-specific immunogen. |
| Clonality | Polyclonal |

| | |
|--------------------------------|--|
| Concentration | 1 mg/ml |
| Observed band | |
| Human Gene ID | 9943 |
| Human Swiss-Prot Number | O95747 |
| Alternative Names | OXSR1; KIAA1101; OSR1; Serine/threonine-protein kinase OSR1; Oxidative stress-responsive 1 protein |

Background

The product of this gene belongs to the Ser/Thr protein kinase family of proteins. It regulates downstream kinases in response to environmental stress, and may play a role in regulating the actin cytoskeleton. [provided by RefSeq, Jul 2008],



Immunohistochemistry analysis of paraffin-embedded human colon carcinoma tissue, using OSR1 Antibody. The picture on the right is blocked with the synthesized peptide.