

**Cdc25A (phospho Ser178) rabbit pAb****Cat#: orb771005 (Manual)**

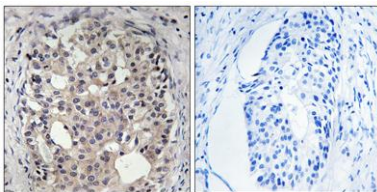
For research use only. Not intended for diagnostic use.

<b>Product Name</b>	Cdc25A (phospho Ser178) rabbit pAb
<b>Host species</b>	Rabbit
<b>Applications</b>	WB;IHC;IF;ELISA
<b>Species Cross-Reactivity</b>	Human;Mouse;Rat
<b>Recommended dilutions</b>	Western Blot: 1/500 - 1/2000. Immunohistochemistry: 1/100 - 1/300. ELISA: 1/10000. Not yet tested in other applications.
<b>Immunogen</b>	The antiserum was produced against synthesized peptide derived from human CDC25A around the phosphorylation site of Ser178. AA range:144-193
<b>Specificity</b>	Phospho-Cdc25A (S178) Polyclonal Antibody detects endogenous levels of Cdc25A protein only when phosphorylated at S178.
<b>Formulation</b>	Liquid in PBS containing 50% glycerol, 0.5% BSA and 0.02% sodium azide..
<b>Storage</b>	Store at -20°C. Avoid repeated freeze-thaw cycles.
<b>Protein Name</b>	M-phase inducer phosphatase 1
<b>Gene Name</b>	CDC25A
<b>Cellular localization</b>	intracellular,nucleus,nucleoplasm,cytoplasm,cytosol,
<b>Purification</b>	The antibody was affinity-purified from rabbit antiserum by affinity-chromatography using epitope-specific immunogen.
<b>Clonality</b>	Polyclonal

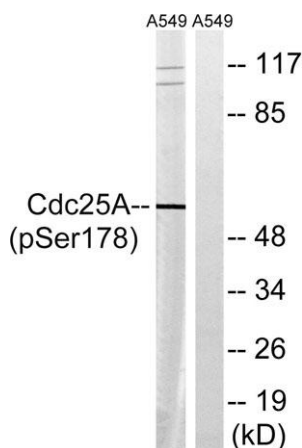
<b>Concentration</b>	1 mg/ml
<b>Observed band</b>	59kD
<b>Human Gene ID</b>	993
<b>Human Swiss-Prot Number</b>	P30304
<b>Alternative Names</b>	CDC25A; M-phase inducer phosphatase 1; Dual specificity phosphatase Cdc25A

## Background

cell division cycle 25A(CDC25A) Homo sapiens CDC25A is a member of the CDC25 family of phosphatases. CDC25A is required for progression from G1 to the S phase of the cell cycle. It activates the cyclin-dependent kinase CDC2 by removing two phosphate groups. CDC25A is specifically degraded in response to DNA damage, which prevents cells with chromosomal abnormalities from progressing through cell division. CDC25A is an oncogene, although its exact role in oncogenesis has not been demonstrated. Two transcript variants encoding different isoforms have been found for this gene. [provided by RefSeq, Jul 2008],



**Immunohistochemistry analysis of paraffin-embedded human breast carcinoma, using CDC25A (Phospho-Ser178) Antibody. The picture on the right is blocked with the phospho peptide.**



**Western blot analysis of lysates from A549 cells treated with UV 15', using CDC25A (Phospho-Ser178) Antibody. The lane on the right is blocked with the phospho peptide.**



Explore. Bioreagents.

[www.biorbyt.com](http://www.biorbyt.com)