

Cdc25A (phospho Ser124) rabbit pAb**Cat#: orb771003 (Manual)**

For research use only. Not intended for diagnostic use.

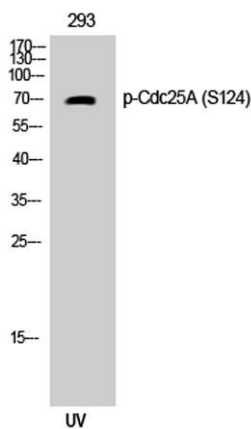
Product Name	Cdc25A (phospho Ser124) rabbit pAb
Host species	Rabbit
Applications	WB;ELISA
Species Cross-Reactivity	Human;Mouse;Rat
Recommended dilutions	Western Blot: 1/500 - 1/2000. ELISA: 1/5000. Not yet tested in other applications.
Immunogen	The antiserum was produced against synthesized peptide derived from human CDC25A around the phosphorylation site of Ser124. AA range:90-139
Specificity	Phospho-Cdc25A (S124) Polyclonal Antibody detects endogenous levels of Cdc25A protein only when phosphorylated at S124.
Formulation	Liquid in PBS containing 50% glycerol, 0.5% BSA and 0.02% sodium azide..
Storage	Store at -20°C. Avoid repeated freeze-thaw cycles.
Protein Name	M-phase inducer phosphatase 1
Gene Name	CDC25A
Cellular localization	intracellular,nucleus,nucleoplasm,cytoplasm,cytosol,
Purification	The antibody was affinity-purified from rabbit antiserum by affinity-chromatography using epitope-specific immunogen.
Clonality	Polyclonal

Explore. Bioreagents.

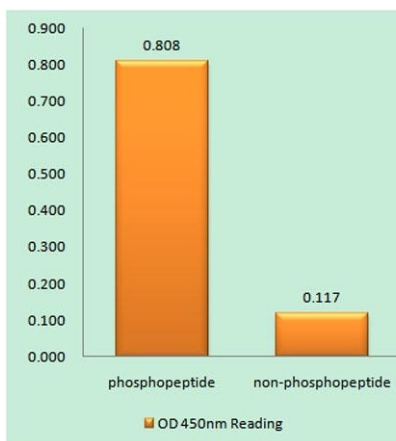
Concentration	1 mg/ml
Observed band	70kD
Human Gene ID	993
Human Swiss-Prot Number	P30304
Alternative Names	CDC25A; M-phase inducer phosphatase 1; Dual specificity phosphatase Cdc25A

Background

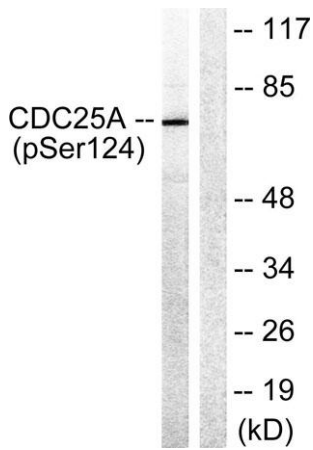
cell division cycle 25A(CDC25A) Homo sapiens CDC25A is a member of the CDC25 family of phosphatases. CDC25A is required for progression from G1 to the S phase of the cell cycle. It activates the cyclin-dependent kinase CDC2 by removing two phosphate groups. CDC25A is specifically degraded in response to DNA damage, which prevents cells with chromosomal abnormalities from progressing through cell division. CDC25A is an oncogene, although its exact role in oncogenesis has not been demonstrated. Two transcript variants encoding different isoforms have been found for this gene. [provided by RefSeq, Jul 2008],



Western Blot analysis of 293 cells using Phospho-Cdc25A (S124) Polyclonal Antibody



Enzyme-Linked Immunosorbent Assay (Phospho-ELISA) for Immunogen Phosphopeptide (Phospho-left) and Non-Phosphopeptide (Phospho-right), using CDC25A (Phospho-Ser124) Antibody



Western blot analysis of lysates from 293 cells treated with UV 15', using CDC25A (Phospho-Ser124) Antibody. The lane on the right is blocked with the phospho peptide.