

**MAD2L1BP rabbit pAb****Cat#: orb770944 (Manual)**

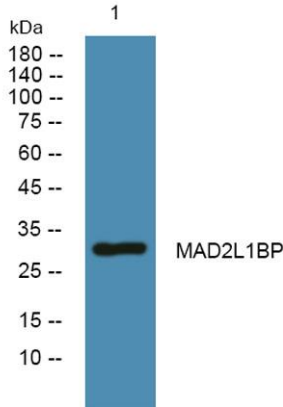
For research use only. Not intended for diagnostic use.

<b>Product Name</b>	MAD2L1BP rabbit pAb
<b>Host species</b>	Rabbit
<b>Applications</b>	WB;ELISA
<b>Species Cross-Reactivity</b>	Human;Rat;Mouse;
<b>Recommended dilutions</b>	Western Blot: 1/500 - 1/2000. ELISA: 1/10000. Not yet tested in other applications.
<b>Immunogen</b>	Synthesized peptide derived from MAD2L1BP . at AA range: 10-90
<b>Specificity</b>	MAD2L1BP Polyclonal Antibody detects endogenous levels of MAD2L1BP protein.
<b>Formulation</b>	Liquid in PBS containing 50% glycerol, 0.5% BSA and 0.02% sodium azide..
<b>Storage</b>	Store at -20°C. Avoid repeated freeze-thaw cycles.
<b>Protein Name</b>	MAD2L1-binding protein
<b>Gene Name</b>	MAD2L1BP
<b>Cellular localization</b>	Nucleus. Cytoplasm, cytoskeleton, spindle. During early mitosis, unevenly distributed throughout the nucleoplasm. From metaphase to anaphase, concentrated on the spindle.
<b>Purification</b>	The antibody was affinity-purified from rabbit antiserum by affinity-chromatography using epitope-specific immunogen.

<b>Clonality</b>	Polyclonal
<b>Concentration</b>	1 mg/ml
<b>Observed band</b>	31kD
<b>Human Gene ID</b>	9587
<b>Human Swiss-Prot Number</b>	Q15013
<b>Alternative Names</b>	MAD2L1BP; CMT2; KIAA0110; MAD2L1-binding protein; Caught by MAD2 protein

## Background

The protein encoded by this gene was identified as a binding protein of the MAD2 mitotic arrest deficient-like 1 (MAD2/MAD2L1). MAD2 is a key component of the spindle checkpoint that delays the onset of anaphase until all the kinetochores are attached to the spindle. This protein may interact with the spindle checkpoint and coordinate cell cycle events in late mitosis. Alternatively spliced transcript variants encoding distinct isoforms have been observed. [provided by RefSeq, Jul 2008],



Western blot analysis of lysates from SH-SY5Y cells, primary antibody was diluted at 1:1000, 4<sup>o</sup> over night