

**CD28 (phospho Tyr218) rabbit pAb****Cat#: orb770907 (Manual)**

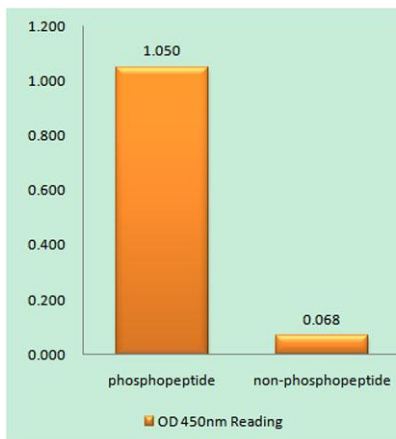
For research use only. Not intended for diagnostic use.

<b>Product Name</b>	CD28 (phospho Tyr218) rabbit pAb
<b>Host species</b>	Rabbit
<b>Applications</b>	WB;ELISA
<b>Species Cross-Reactivity</b>	Human
<b>Recommended dilutions</b>	Western Blot: 1/500 - 1/2000. ELISA: 1/40000. Not yet tested in other applications.
<b>Immunogen</b>	The antiserum was produced against synthesized peptide derived from human CD28 around the phosphorylation site of Tyr218. AA range:171-220
<b>Specificity</b>	Phospho-CD28 (Y218) Polyclonal Antibody detects endogenous levels of CD28 protein only when phosphorylated at Y218.
<b>Formulation</b>	Liquid in PBS containing 50% glycerol, 0.5% BSA and 0.02% sodium azide..
<b>Storage</b>	Store at -20°C. Avoid repeated freeze-thaw cycles.
<b>Protein Name</b>	T-cell-specific surface glycoprotein CD28
<b>Gene Name</b>	CD28
<b>Cellular localization</b>	Membrane; Single-pass type I membrane protein.; [Isoform 3]: Cell surface .
<b>Purification</b>	The antibody was affinity-purified from rabbit antiserum by affinity-chromatography using epitope-specific immunogen.
<b>Clonality</b>	Polyclonal

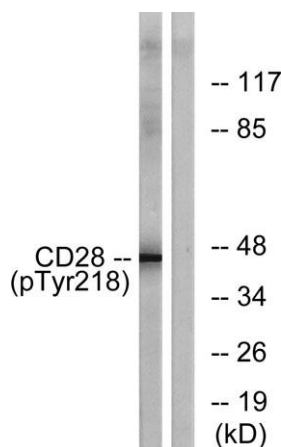
<b>Concentration</b>	1 mg/ml
<b>Observed band</b>	45kD
<b>Human Gene ID</b>	940
<b>Human Swiss-Prot Number</b>	P10747
<b>Alternative Names</b>	CD28; T-cell-specific surface glycoprotein CD28; TP44; CD antigen CD28

**Background**

The protein encoded by this gene is essential for T-cell proliferation and survival, cytokine production, and T-helper type-2 development. Several alternatively spliced transcript variants encoding different isoforms have been found for this gene.[provided by RefSeq, Jul 2011],



**Enzyme-Linked Immunosorbent Assay (Phospho-ELISA) for Immunogen Phosphopeptide (Phospho-left) and Non-Phosphopeptide (Phospho-right), using CD28 (Phospho-Tyr218) Antibody**



**Western blot analysis of lysates from HepG2 cells treated with nocodazole 1ug/ml 16h, using CD28 (Phospho-Tyr218) Antibody. The lane on the right is blocked with the phospho peptide.**