

**Ribosomal Protein L23 rabbit pAb****Cat#: orb770900 (Manual)**

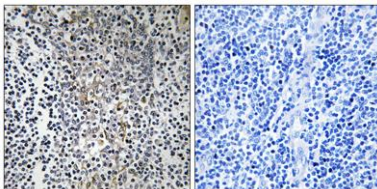
For research use only. Not intended for diagnostic use.

<b>Product Name</b>	Ribosomal Protein L23 rabbit pAb
<b>Host species</b>	Rabbit
<b>Applications</b>	WB;IHC;IF;ELISA
<b>Species Cross-Reactivity</b>	Human;Mouse;Rat;Monkey
<b>Recommended dilutions</b>	Western Blot: 1/500 - 1/2000. Immunohistochemistry: 1/100 - 1/300. ELISA: 1/40000. Not yet tested in other applications.
<b>Immunogen</b>	The antiserum was produced against synthesized peptide derived from human RPL23. AA range:51-100
<b>Specificity</b>	Ribosomal Protein L23 Polyclonal Antibody detects endogenous levels of Ribosomal Protein L23 protein.
<b>Formulation</b>	Liquid in PBS containing 50% glycerol, 0.5% BSA and 0.02% sodium azide..
<b>Storage</b>	Store at -20°C. Avoid repeated freeze-thaw cycles.
<b>Protein Name</b>	60S ribosomal protein L23
<b>Gene Name</b>	RPL23
<b>Cellular localization</b>	nucleolus,cytoplasm,cytosol,ribosome,focal adhesion,membrane,cytosolic large ribosomal subunit,extracellular matrix,extracellular exosome,
<b>Purification</b>	The antibody was affinity-purified from rabbit antiserum by affinity-chromatography using epitope-specific immunogen.
<b>Clonality</b>	Polyclonal

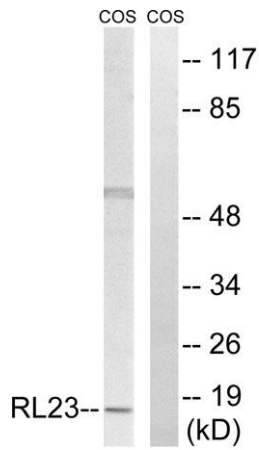
<b>Concentration</b>	1 mg/ml
<b>Observed band</b>	15kD
<b>Human Gene ID</b>	9349
<b>Human Swiss-Prot Number</b>	P62829
<b>Alternative Names</b>	RPL23; 60S ribosomal protein L23; 60S ribosomal protein L17

**Background**

Ribosomes, the organelles that catalyze protein synthesis, consist of a small 40S subunit and a large 60S subunit. Together these subunits are composed of 4 RNA species and approximately 80 structurally distinct proteins. This gene encodes a ribosomal protein that is a component of the 60S subunit. The protein belongs to the L14P family of ribosomal proteins. It is located in the cytoplasm. This gene has been referred to as rpL17 because the encoded protein shares amino acid identity with ribosomal protein L17 from *Saccharomyces cerevisiae*; however, its official symbol is RPL23. As is typical for genes encoding ribosomal proteins, there are multiple processed pseudogenes of this gene dispersed through the genome. [provided by RefSeq, Jul 2008],



**Immunohistochemistry analysis of paraffin-embedded human tonsil tissue, using RPL23 Antibody. The picture on the right is blocked with the synthesized peptide.**



**Western blot analysis of lysates from COS7 cells, using RPL23 Antibody. The lane on the right is blocked with the synthesized peptide.**