

CD19 (phospho Tyr531) rabbit pAb**Cat#: orb770891 (Manual)**

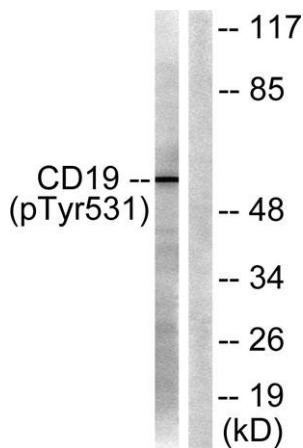
For research use only. Not intended for diagnostic use.

Product Name	CD19 (phospho Tyr531) rabbit pAb
Host species	Rabbit
Applications	WB;ELISA
Species Cross-Reactivity	Human;Mouse;Monkey
Recommended dilutions	Western Blot: 1/500 - 1/2000. ELISA: 1/10000. Not yet tested in other applications.
Immunogen	The antiserum was produced against synthesized peptide derived from human CD19 around the phosphorylation site of Tyr531. AA range:501-550
Specificity	Phospho-CD19 (Y531) Polyclonal Antibody detects endogenous levels of CD19 protein only when phosphorylated at Y531.
Formulation	Liquid in PBS containing 50% glycerol, 0.5% BSA and 0.02% sodium azide..
Storage	Store at -20°C. Avoid repeated freeze-thaw cycles.
Protein Name	B-lymphocyte antigen CD19
Gene Name	CD19
Cellular localization	Cell membrane ; Single-pass type I membrane protein . Membrane raft ; Single-pass type I membrane protein .
Purification	The antibody was affinity-purified from rabbit antiserum by affinity-chromatography using epitope-specific immunogen.
Clonality	Polyclonal

Concentration	1 mg/ml
Observed band	61kD
Human Gene ID	930
Human Swiss-Prot Number	P15391
Alternative Names	CD19; B-lymphocyte antigen CD19; B-lymphocyte surface antigen B4; Differentiation antigen CD19; T-cell surface antigen Leu-12; CD antigen CD19

Background

Lymphocytes proliferate and differentiate in response to various concentrations of different antigens. The ability of the B cell to respond in a specific, yet sensitive manner to the various antigens is achieved with the use of low-affinity antigen receptors. This gene encodes a cell surface molecule which assembles with the antigen receptor of B lymphocytes in order to decrease the threshold for antigen receptor-dependent stimulation. [provided by RefSeq, Jul 2008],



Western blot analysis of lysates from COS7 cells treated with Serum 10% 30', using CD19 (Phospho-Tyr531) Antibody. The lane on the right is blocked with the phospho peptide.