

MAPKAPK-2 (phospho Thr222) rabbit pAb**Cat#: orb770879 (Manual)**

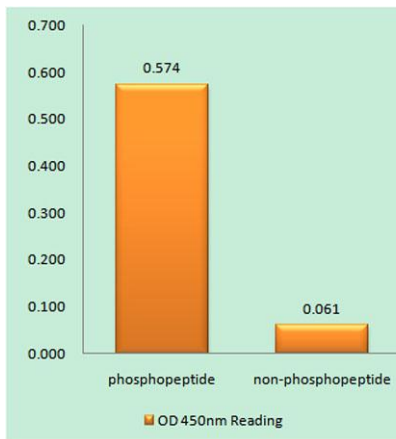
For research use only. Not intended for diagnostic use.

Product Name	MAPKAPK-2 (phospho Thr222) rabbit pAb
Host species	Rabbit
Applications	WB;IHC;IF;ELISA
Species Cross-Reactivity	Human;Mouse;Rat;Monkey
Recommended dilutions	Western Blot: 1/500 - 1/2000. Immunohistochemistry: 1/100 - 1/300. ELISA: 1/20000. Not yet tested in other applications.
Immunogen	The antiserum was produced against synthesized peptide derived from human MAPKAPK-2 around the phosphorylation site of Thr222. AA range:188-237
Specificity	Phospho-MAPKAPK-2 (T222) Polyclonal Antibody detects endogenous levels of MAPKAPK-2 protein only when phosphorylated at T222.
Formulation	Liquid in PBS containing 50% glycerol, 0.5% BSA and 0.02% sodium azide..
Storage	Store at -20°C. Avoid repeated freeze-thaw cycles.
Protein Name	MAP kinase-activated protein kinase 2
Gene Name	MAPKAPK2
Cellular localization	Cytoplasm . Nucleus . Phosphorylation and subsequent activation releases the autoinhibitory helix, resulting in the export from the nucleus into the cytoplasm.
Purification	The antibody was affinity-purified from rabbit antiserum by affinity-chromatography using epitope-specific immunogen.

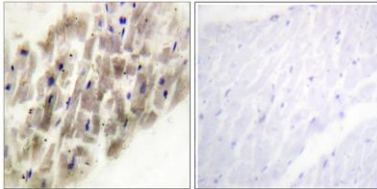
Clonality	Polyclonal
Concentration	1 mg/ml
Observed band	45kD
Human Gene ID	9261
Human Swiss-Prot Number	P49137
Alternative Names	MAPKAPK2; MAP kinase-activated protein kinase 2; MAPK-activated protein kinase 2; MAPKAP kinase 2; MAPKAP-K2; MAPKAPK-2; MK-2; MK2

Background

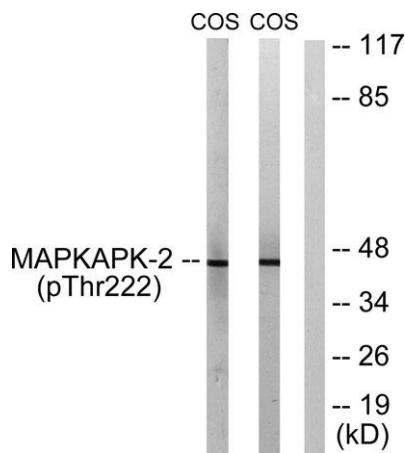
This gene encodes a member of the Ser/Thr protein kinase family. This kinase is regulated through direct phosphorylation by p38 MAP kinase. In conjunction with p38 MAP kinase, this kinase is known to be involved in many cellular processes including stress and inflammatory responses, nuclear export, gene expression regulation and cell proliferation. Heat shock protein HSP27 was shown to be one of the substrates of this kinase in vivo. Two transcript variants encoding two different isoforms have been found for this gene. [provided by RefSeq, Jul 2008].



Enzyme-Linked Immunosorbent Assay (Phospho-ELISA) for Immunogen Phosphopeptide (Phospho-left) and Non-Phosphopeptide (Phospho-right), using MAPKAPK-2 (Phospho-Thr222) Antibody



Immunohistochemistry analysis of paraffin-embedded human heart, using MAPKAPK-2 (Phospho-Thr222) Antibody. The picture on the right is blocked with the phospho peptide.



Western blot analysis of lysates from COS7 cells treated with UV 15', using MAPKAPK-2 (Phospho-Thr222) Antibody. The lane on the right is blocked with the phospho peptide.