

CD5 (phospho Tyr453) rabbit pAb**Cat#: orb770864 (Manual)**

For research use only. Not intended for diagnostic use.

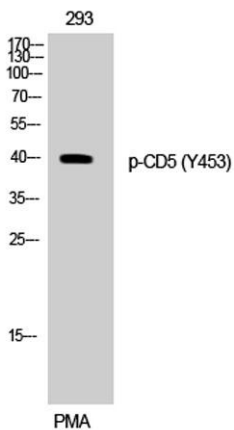
| | |
|---------------------------------|--|
| Product Name | CD5 (phospho Tyr453) rabbit pAb |
| Host species | Rabbit |
| Applications | WB;IHC;IF;ELISA |
| Species Cross-Reactivity | Human;Mouse;Rat |
| Recommended dilutions | Western Blot: 1/500 - 1/2000. Immunohistochemistry: 1/100 - 1/300. Immunofluorescence: 1/200 - 1/1000. ELISA: 1/20000. Not yet tested in other applications. |
| Immunogen | The antiserum was produced against synthesized peptide derived from human CD5 around the phosphorylation site of Tyr453. AA range:421-470 |
| Specificity | Phospho-CD5 (Y453) Polyclonal Antibody detects endogenous levels of CD5 protein only when phosphorylated at Y453. |
| Formulation | Liquid in PBS containing 50% glycerol, 0.5% BSA and 0.02% sodium azide.. |
| Storage | Store at -20°C. Avoid repeated freeze-thaw cycles. |
| Protein Name | T-cell surface glycoprotein CD5 |
| Gene Name | CD5 |
| Cellular localization | Cell membrane; Single-pass type I membrane protein. |
| Purification | The antibody was affinity-purified from rabbit antiserum by affinity-chromatography using epitope-specific immunogen. |
| Clonality | Polyclonal |

Explore. Bioreagents.

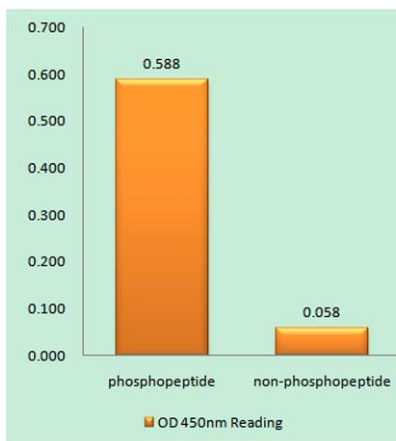
| | |
|--------------------------------|---|
| Concentration | 1 mg/ml |
| Observed band | 40kD |
| Human Gene ID | 921 |
| Human Swiss-Prot Number | P06127 |
| Alternative Names | CD5; LEU1; T-cell surface glycoprotein CD5; Lymphocyte antigen T1/Leu-1; CD antigen CD5 |

Background

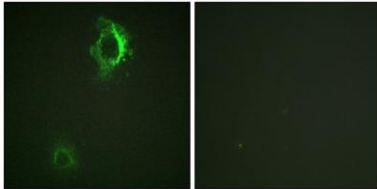
function: May act as a receptor in regulating T-cell proliferation. CD5 interacts with CD72/LYB-2., similarity: Contains 3 SRCR domains.,



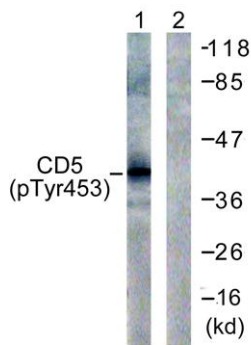
Western Blot analysis of 293 cells using Phospho-CD5 (Y453) Polyclonal Antibody



Enzyme-Linked Immunosorbent Assay (Phospho-ELISA) for Immunogen Phosphopeptide (Phospho-left) and Non-Phosphopeptide (Phospho-right), using CD5 (Phospho-Tyr453) Antibody



Immunofluorescence analysis of HepG2 cells, using CD5 (Phospho-Tyr453) Antibody. The picture on the right is blocked with the phospho peptide.



Western blot analysis of lysates from 293 cells treated with PMA 125ng/ml 30' , using CD5 (Phospho-Tyr453) Antibody. The lane on the right is blocked with the phospho peptide.