

CD3 ζ (phospho Tyr142) rabbit pAb**Cat#: orb770858 (Manual)**

For research use only. Not intended for diagnostic use.

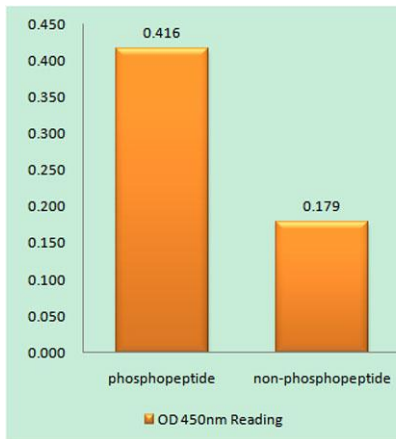
Product Name	CD3 ζ (phospho Tyr142) rabbit pAb
Host species	Rabbit
Applications	WB;IHC;IF;ELISA
Species Cross-Reactivity	Human;Mouse;Rat;Monkey
Recommended dilutions	Western Blot: 1/500 - 1/2000. Immunohistochemistry: 1/100 - 1/300. ELISA: 1/5000. Not yet tested in other applications.
Immunogen	The antiserum was produced against synthesized peptide derived from human CD3 zeta around the phosphorylation site of Tyr142. AA range:111-160
Specificity	Phospho-CD3 ζ (Y142) Polyclonal Antibody detects endogenous levels of CD3 ζ protein only when phosphorylated at Y142.
Formulation	Liquid in PBS containing 50% glycerol, 0.5% BSA and 0.02% sodium azide..
Storage	Store at -20°C. Avoid repeated freeze-thaw cycles.
Protein Name	T-cell surface glycoprotein CD3 zeta chain
Gene Name	CD247
Cellular localization	Cell membrane ; Single-pass type I membrane protein.
Purification	The antibody was affinity-purified from rabbit antiserum by affinity-chromatography using epitope-specific immunogen.
Clonality	Polyclonal

Explore. Bioreagents.

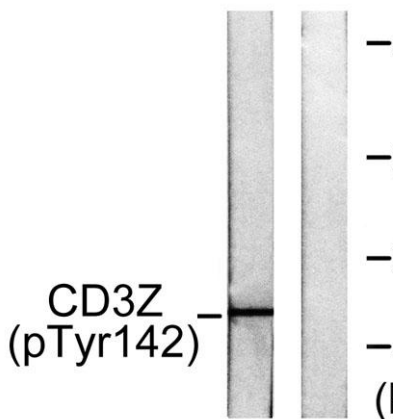
Concentration	1 mg/ml
Observed band	20kD
Human Gene ID	919
Human Swiss-Prot Number	P20963
Alternative Names	CD247; CD3Z; T3Z; TCRZ; T-cell surface glycoprotein CD3 zeta chain; T-cell receptor T3 zeta chain; CD antigen CD247

Background

The protein encoded by this gene is T-cell receptor zeta, which together with T-cell receptor alpha/beta and gamma/delta heterodimers, and with CD3-gamma, -delta and -epsilon, forms the T-cell receptor-CD3 complex. The zeta chain plays an important role in coupling antigen recognition to several intracellular signal-transduction pathways. Low expression of the antigen results in impaired immune response. Two alternatively spliced transcript variants encoding distinct isoforms have been found for this gene. [provided by RefSeq, Jul 2008],



Enzyme-Linked Immunosorbent Assay (Phospho-ELISA) for Immunogen Phosphopeptide (Phospho-left) and Non-Phosphopeptide (Phospho-right), using CD3 zeta (Phospho-Tyr142) Antibody



Western blot analysis of lysates from Jurkat cells treated with UV 15', using CD3 zeta (Phospho-Tyr142) Antibody. The lane on the right is blocked with the phospho peptide.



Explore. Bioreagents.

www.biorbyt.com