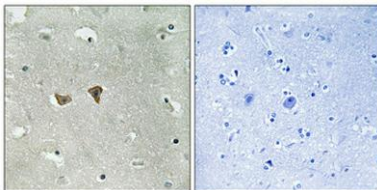


Lfc (phospho Ser886) rabbit pAb**Cat#: orb770855 (Manual)**

For research use only. Not intended for diagnostic use.

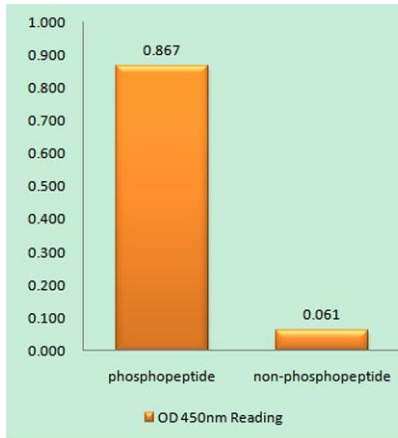
Product Name	Lfc (phospho Ser886) rabbit pAb
Host species	Rabbit
Applications	WB;IHC;IF;ELISA
Species Cross-Reactivity	Human;Mouse;Rat
Recommended dilutions	Western Blot: 1/500 - 1/2000. Immunohistochemistry: 1/100 - 1/300. ELISA: 1/5000. Not yet tested in other applications.
Immunogen	The antiserum was produced against synthesized peptide derived from human Rho/Rac Guanine Nucleotide Exchange Factor 2 around the phosphorylation site of Ser885. AA range:851-900
Specificity	Phospho-Lfc (S885) Polyclonal Antibody detects endogenous levels of Lfc protein only when phosphorylated at S885.
Formulation	Liquid in PBS containing 50% glycerol, 0.5% BSA and 0.02% sodium azide..
Storage	Store at -20°C. Avoid repeated freeze-thaw cycles.
Protein Name	Rho guanine nucleotide exchange factor 2
Gene Name	ARHGEF2
Cellular localization	Cytoplasm, cytoskeleton . Cytoplasm . Cell junction, tight junction . Golgi apparatus . Cytoplasm, cytoskeleton, spindle . Cell projection, ruffle membrane . Cytoplasmic vesicle . Localizes to the tips of cortical microtubules of the mitotic spindle during cell division, and is further released upon microtubule depolymerization (PubMed:15827085). Recruited into membrane ruffles induced by <i>S.flexneri</i> at tight junctions of polarized epithelial cells (PubMed:19043560). Colocalized with NOD2 and RIPK2 in vesicles and with the cytoskeleton (PubMed:21887730). .

Purification	The antibody was affinity-purified from rabbit antiserum by affinity-chromatography using epitope-specific immunogen.
Clonality	Polyclonal
Concentration	1 mg/ml
Observed band	111kD
Human Gene ID	9181
Human Swiss-Prot Number	Q92974
Alternative Names	ARHGEF2; KIAA0651; LFP40; Rho guanine nucleotide exchange factor 2; Guanine nucleotide exchange factor H1; GEF-H1; Microtubule-regulated Rho-GEF; Proliferating cell nucleolar antigen p40
Background	Rho GTPases play a fundamental role in numerous cellular processes that are initiated by extracellular stimuli that work through G protein coupled receptors. The encoded protein may form complex with G proteins and stimulate rho-dependent signals. Alternatively spliced transcript variants encoding different isoforms have been identified.[provided by RefSeq, Jun 2009],

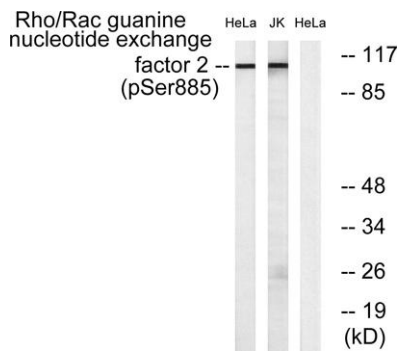


Immunohistochemical analysis of paraffin-embedded Human brain. Antibody was diluted at 1:100(4° overnight). High-pressure and temperature Tris-EDTA,pH8.0 was used for antigen retrieval. Negative contrl (right) obtained from antibody was pre-absorbed by immunogen peptide.

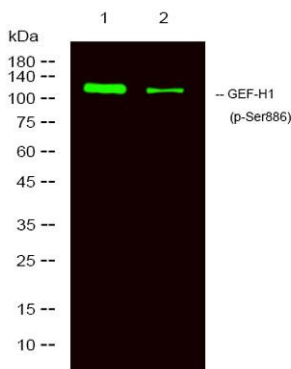
Explore. Bioreagents.



Enzyme-Linked Immunosorbent Assay (Phospho-ELISA) for Immunogen Phosphopeptide (Phospho-left) and Non-Phosphopeptide (Phospho-right), using Rho/Rac Guanine Nucleotide Exchange Factor 2 (Phospho-Ser885) Antibody



Western blot analysis of lysates from HeLa cells treated with TSA 400nM 24H and Jurkat cells treated with forskolin 40nM 30', using Rho/Rac Guanine Nucleotide Exchange Factor 2 (Phospho-Ser885) Antibody. The lane on the right is blocked with the phospho peptide.



Western Blot analysis of 1 A431 treated with LPS, 2 A431, using primary antibody at 1:1000 dilution. Secondary antibody(catalog#:RS23920) was diluted at 1:10000