

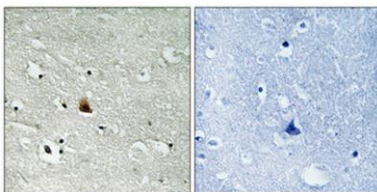
Nek9 (phospho Thr210) rabbit pAb**Cat#: orb770853 (Manual)**

For research use only. Not intended for diagnostic use.

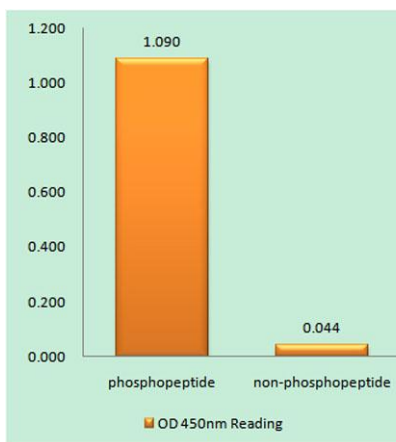
Product Name	Nek9 (phospho Thr210) rabbit pAb
Host species	Rabbit
Applications	WB;IHC;IF;ELISA
Species Cross-Reactivity	Human;Mouse;Rat
Recommended dilutions	Western Blot: 1/500 - 1/2000. Immunohistochemistry: 1/100 - 1/300. Immunofluorescence: 1/200 - 1/1000. ELISA: 1/20000. Not yet tested in other applications.
Immunogen	The antiserum was produced against synthesized peptide derived from human NEK9 around the phosphorylation site of Thr210. AA range:176-225
Specificity	Phospho-Nek9 (T210) Polyclonal Antibody detects endogenous levels of Nek9 protein only when phosphorylated at T210.
Formulation	Liquid in PBS containing 50% glycerol, 0.5% BSA and 0.02% sodium azide..
Storage	Store at -20°C. Avoid repeated freeze-thaw cycles.
Protein Name	Serine/threonine-protein kinase Nek9
Gene Name	NEK9
Cellular localization	Cytoplasm . Nucleus .
Purification	The antibody was affinity-purified from rabbit antiserum by affinity-chromatography using epitope-specific immunogen.
Clonality	Polyclonal

Concentration	1 mg/ml
Observed band	110kD
Human Gene ID	91754
Human Swiss-Prot Number	Q8TD19
Alternative Names	NEK9; KIAA1995; NEK8; NERCC; Serine/threonine-protein kinase Nek9; Nercc1 kinase; Never in mitosis A-related kinase 9; NimA-related protein kinase 9; NimA-related kinase 8; Nek8

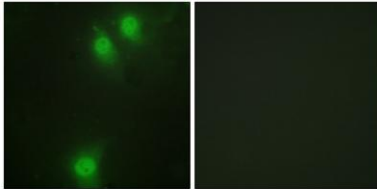
Background This gene encodes a member of the NimA (never in mitosis A) family of serine/threonine protein kinases. The encoded protein is activated in mitosis and, in turn, activates other family members during mitosis. This protein also mediates cellular processes that are essential for interphase progression. [provided by RefSeq, Jul 2016],



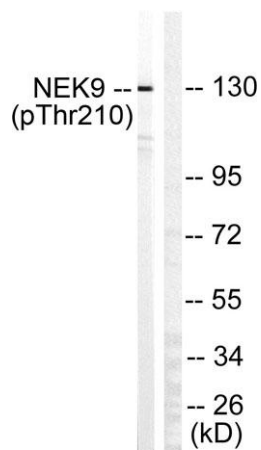
Immunohistochemical analysis of paraffin-embedded Human brain. Antibody was diluted at 1:100(4° overnight). High-pressure and temperature Tris-EDTA,pH8.0 was used for antigen retrieval. Negative ctrl (right) obtained from antibody was pre-absorbed by immunogen peptide.



Enzyme-Linked Immunosorbent Assay (Phospho-ELISA) for Immunogen Phosphopeptide (Phospho-left) and Non-Phosphopeptide (Phospho-right), using NEK9 (Phospho-Thr210) Antibody



Immunofluorescence analysis of HeLa cells, using NEK9 (Phospho-Thr210) Antibody. The picture on the right is blocked with the phospho peptide.



Western blot analysis of lysates from HepG2 cells, using NEK9 (Phospho-Thr210) Antibody. The lane on the right is blocked with the phospho peptide.