

**Hrs (phospho Tyr334) rabbit pAb****Cat#: orb770843 (Manual)**

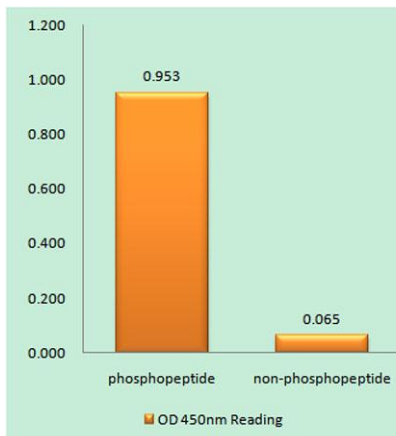
For research use only. Not intended for diagnostic use.

<b>Product Name</b>	Hrs (phospho Tyr334) rabbit pAb
<b>Host species</b>	Rabbit
<b>Applications</b>	WB;IHC;IF;ELISA
<b>Species Cross-Reactivity</b>	Human;Mouse;Rat
<b>Recommended dilutions</b>	Western Blot: 1/500 - 1/2000. Immunohistochemistry: 1/100 - 1/300. Immunofluorescence: 1/200 - 1/1000. ELISA: 1/10000. Not yet tested in other applications.
<b>Immunogen</b>	The antiserum was produced against synthesized peptide derived from human HRS around the phosphorylation site of Tyr334. AA range:301-350
<b>Specificity</b>	Phospho-Hrs (Y334) Polyclonal Antibody detects endogenous levels of Hrs protein only when phosphorylated at Y334.
<b>Formulation</b>	Liquid in PBS containing 50% glycerol, 0.5% BSA and 0.02% sodium azide..
<b>Storage</b>	Store at -20°C. Avoid repeated freeze-thaw cycles.
<b>Protein Name</b>	Hepatocyte growth factor-regulated tyrosine kinase substrate
<b>Gene Name</b>	HGS
<b>Cellular localization</b>	Cytoplasm . Early endosome membrane ; Peripheral membrane protein ; Cytoplasmic side . Endosome, multivesicular body membrane ; Peripheral membrane protein . Colocalizes with UBQLN1 in ubiquitin-rich cytoplasmic aggregates that are not endocytic compartments. .
<b>Purification</b>	The antibody was affinity-purified from rabbit antiserum by affinity-chromatography using epitope-specific immunogen.

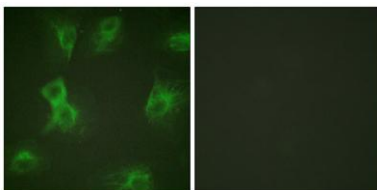
<b>Clonality</b>	Polyclonal
<b>Concentration</b>	1 mg/ml
<b>Observed band</b>	86kD
<b>Human Gene ID</b>	9146
<b>Human Swiss-Prot Number</b>	O14964
<b>Alternative Names</b>	HGS; HRS; Hepatocyte growth factor-regulated tyrosine kinase substrate; Hrs; Protein pp110

## Background

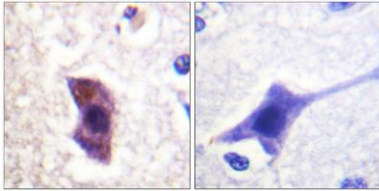
The protein encoded by this gene regulates endosomal sorting and plays a critical role in the recycling and degradation of membrane receptors. The encoded protein sorts monoubiquitinated membrane proteins into the multivesicular body, targeting these proteins for lysosome-dependent degradation. [provided by RefSeq, Dec 2010],



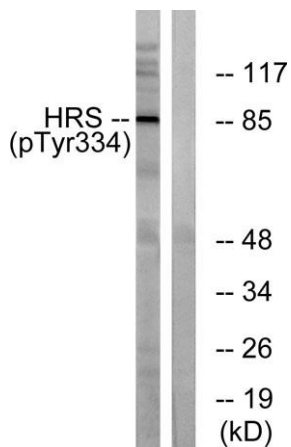
**Enzyme-Linked Immunosorbent Assay (Phospho-ELISA) for Immunogen Phosphopeptide (Phospho-left) and Non-Phosphopeptide (Phospho-right), using HRS (Phospho-Tyr334) Antibody**



**Immunofluorescence analysis of HeLa cells treated with Forskolin 40nM 15', using HRS (Phospho-Tyr334) Antibody. The picture on the right is blocked with the phospho peptide.**



**Immunohistochemistry analysis of paraffin-embedded human brain, using HRS (Phospho-Tyr334) Antibody. The picture on the right is blocked with the phospho peptide.**



**Western blot analysis of lysates from HepG2 cells treated with PMA 125ng/ml 30', using HRS (Phospho-Tyr334) Antibody. The lane on the right is blocked with the phospho peptide.**