

Myt 1 (phospho Ser83) rabbit pAb**Cat#: orb770831 (Manual)**

For research use only. Not intended for diagnostic use.

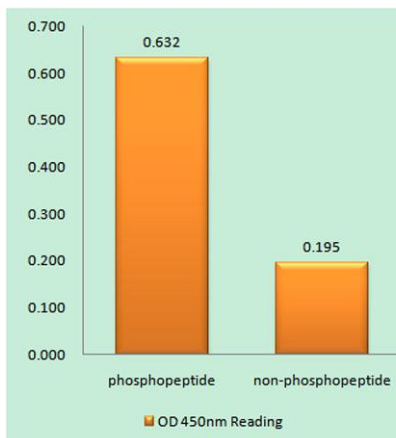
Product Name	Myt 1 (phospho Ser83) rabbit pAb
Host species	Rabbit
Applications	IHC;IF;ELISA
Species Cross-Reactivity	Human;Rat;Mouse;
Recommended dilutions	Immunohistochemistry: 1/100 - 1/300. ELISA: 1/5000. Not yet tested in other applications.
Immunogen	The antiserum was produced against synthesized peptide derived from human MYT1 around the phosphorylation site of Ser83. AA range:49-98
Specificity	Phospho-Myt 1 (S83) Polyclonal Antibody detects endogenous levels of Myt 1 protein only when phosphorylated at S83.
Formulation	Liquid in PBS containing 50% glycerol, 0.5% BSA and 0.02% sodium azide..
Storage	Store at -20°C. Avoid repeated freeze-thaw cycles.
Protein Name	Membrane-associated tyrosine- and threonine-specific cdc2-inhibitory kinase
Gene Name	PKMYT1
Cellular localization	Endoplasmic reticulum membrane ; Peripheral membrane protein . Golgi apparatus membrane ; Peripheral membrane protein .
Purification	The antibody was affinity-purified from rabbit antiserum by affinity-chromatography using epitope-specific immunogen.
Clonality	Polyclonal

Explore. Bioreagents.

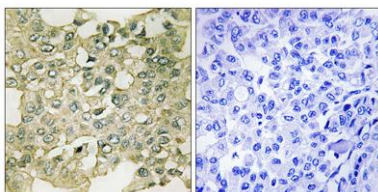
Concentration	1 mg/ml
Observed band	
Human Gene ID	9088
Human Swiss-Prot Number	Q99640
Alternative Names	PKMYT1; MYT1; Membrane-associated tyrosine- and threonine-specific cdc2-inhibitory kinase; Myt1 kinase

Background

This gene encodes a member of the serine/threonine protein kinase family. The encoded protein is a membrane-associated kinase that negatively regulates the G2/M transition of the cell cycle by phosphorylating and inactivating cyclin-dependent kinase 1. The activity of the encoded protein is regulated by polo-like kinase 1. Alternatively spliced transcript variants encoding multiple isoforms have been observed for this gene. [provided by RefSeq, May 2012],



Enzyme-Linked Immunosorbent Assay (Phospho-ELISA) for Immunogen Phosphopeptide (Phospho-left) and Non-Phosphopeptide (Phospho-right), using MYT1 (Phospho-Ser83) Antibody



Immunohistochemistry analysis of paraffin-embedded human breast carcinoma, using MYT1 (Phospho-Ser83) Antibody. The picture on the right is blocked with the phospho peptide.



Explore. Bioreagents.

www.biorbyt.com