

ZFP598 (phospho Tyr306) rabbit pAb**Cat#: orb770829 (Manual)**

For research use only. Not intended for diagnostic use.

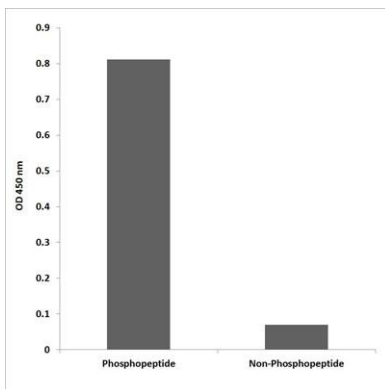
Product Name	ZFP598 (phospho Tyr306) rabbit pAb
Host species	Rabbit
Applications	WB;IHC;IF;ELISA
Species Cross-Reactivity	Human;Mouse
Recommended dilutions	Western Blot: 1/500 - 1/2000. Immunohistochemistry: 1/100 - 1/300. ELISA: 1/10000. Not yet tested in other applications.
Immunogen	Synthesized phospho-peptide around the phosphorylation site of human ZFP598 (phospho Tyr306)
Specificity	Phospho-ZFP598 (Y306) Polyclonal Antibody detects endogenous levels of ZFP598 protein only when phosphorylated at Y306.
Formulation	Liquid in PBS containing 50% glycerol, 0.5% BSA and 0.02% sodium azide..
Storage	Store at -20°C. Avoid repeated freeze-thaw cycles.
Protein Name	Zinc finger protein 598
Gene Name	ZNF598
Cellular localization	
Purification	The antibody was affinity-purified from rabbit antiserum by affinity-chromatography using epitope-specific immunogen.
Clonality	Polyclonal

Explore. Bioreagents.

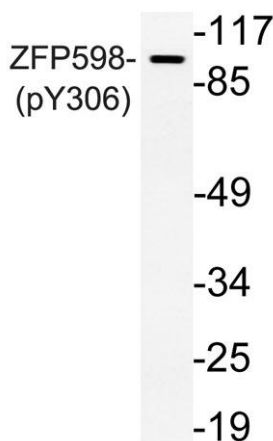
Concentration	1 mg/ml
Observed band	99kD
Human Gene ID	90850
Human Swiss-Prot Number	Q86UK7
Alternative Names	ZNF598; Zinc finger protein 598

Background

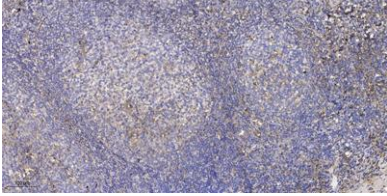
zinc finger protein 598(ZNF598) Homo sapiens Zinc-finger proteins bind nucleic acids and play important roles in various cellular functions, including cell proliferation, differentiation, and apoptosis. This protein and Grb10-interacting GYF protein 2 have been identified as a components of the mammalian 4EHP (m4EHP) complex. The complex is thought to function as a translation repressor in embryonic development. [provided by RefSeq, Oct 2012],



Enzyme-Linked Immunosorbent Assay (Phospho-ELISA) for Immunogen Phosphopeptide (Phospho-left) and Non-Phosphopeptide (Phospho-right), using ZFP598 (Phospho-Tyr306) Antibody



Western blot analysis of lysate from Jurkat cells, using phospho-ZFP598 (Phospho-Tyr306) antibody.



Immunohistochemical analysis of paraffin-embedded human tonsil. 1, Antibody was diluted at 1:200(4° overnight). 2, Tris-EDTA,pH9.0 was used for antigen retrieval. 3,Secondary antibody was diluted at 1:200(room temperature, 30min).