

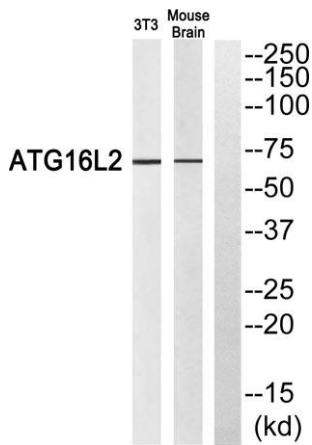
Atg16L2 rabbit pAb**Cat#: orb770797 (Manual)**

For research use only. Not intended for diagnostic use.

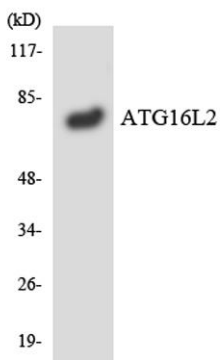
Product Name	Atg16L2 rabbit pAb
Host species	Rabbit
Applications	WB;ELISA
Species Cross-Reactivity	Human;Rat;Mouse;
Recommended dilutions	Western Blot: 1/500 - 1/2000. ELISA: 1/20000. Not yet tested in other applications.
Immunogen	The antiserum was produced against synthesized peptide derived from human ATG16L2. AA range:241-290
Specificity	Atg16L2 Polyclonal Antibody detects endogenous levels of Atg16L2 protein.
Formulation	Liquid in PBS containing 50% glycerol, 0.5% BSA and 0.02% sodium azide..
Storage	Store at -20°C. Avoid repeated freeze-thaw cycles.
Protein Name	Autophagy-related protein 16-2
Gene Name	ATG16L2
Cellular localization	Cytoplasm, cytosol . Localizes also to discrete punctae along the ciliary axoneme. .
Purification	The antibody was affinity-purified from rabbit antiserum by affinity-chromatography using epitope-specific immunogen.
Clonality	Polyclonal

Concentration	1 mg/ml
Observed band	70kD
Human Gene ID	89849
Human Swiss-Prot Number	Q8NAA4
Alternative Names	ATG16L2; WDR80; Autophagy-related protein 16-2; APG16-like 2; WD repeat-containing protein 80

Background function:May play a role in autophagy.,similarity:Belongs to the WD repeat ATG16 family.,similarity:Contains 7 WD repeats.,



Western blot analysis of ATG16L2 Antibody. The lane on the right is blocked with the ATG16L2 peptide.



Western blot analysis of the lysates from RAW264.7cells using ATG16L2 antibody.