

eIF2B δ rabbit pAb**Cat#: orb770778 (Manual)**

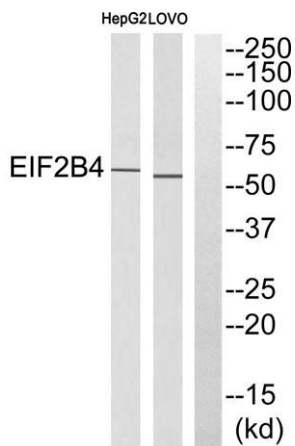
For research use only. Not intended for diagnostic use.

Product Name	eIF2B δ rabbit pAb
Host species	Rabbit
Applications	WB;ELISA
Species Cross-Reactivity	Human;Mouse;Rat
Recommended dilutions	Western Blot: 1/500 - 1/2000. ELISA: 1/5000. Not yet tested in other applications.
Immunogen	The antiserum was produced against synthesized peptide derived from human EIF2B4. AA range:226-275
Specificity	eIF2B δ Polyclonal Antibody detects endogenous levels of eIF2B δ protein.
Formulation	Liquid in PBS containing 50% glycerol, 0.5% BSA and 0.02% sodium azide..
Storage	Store at -20°C. Avoid repeated freeze-thaw cycles.
Protein Name	Translation initiation factor eIF-2B subunit delta
Gene Name	EIF2B4
Cellular localization	cytoplasm,cytosol,eukaryotic translation initiation factor 2B complex,
Purification	The antibody was affinity-purified from rabbit antiserum by affinity-chromatography using epitope-specific immunogen.
Clonality	Polyclonal

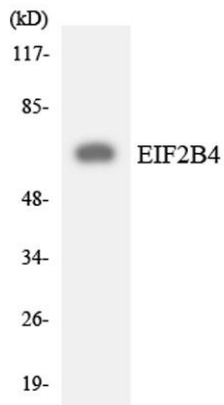
Concentration	1 mg/ml
Observed band	57kD
Human Gene ID	8890
Human Swiss-Prot Number	Q9UI10
Alternative Names	EIF2B4; EIF2BD; Translation initiation factor eIF-2B subunit delta; eIF-2B GDP-GTP exchange factor subunit delta

Background

Eukaryotic initiation factor 2B (EIF2B), which is necessary for protein synthesis, is a GTP exchange factor composed of five different subunits. The protein encoded by this gene is the fourth, or delta, subunit. Defects in this gene are a cause of leukoencephalopathy with vanishing white matter (VWM) and ovarioleukodystrophy. Multiple transcript variants encoding different isoforms have been found for this gene. [provided by RefSeq, Jul 2008],



Western blot analysis of EIF2B4 Antibody. The lane on the right is blocked with the EIF2B4 peptide.



Western blot analysis of the lysates from HeLa cells using EIF2B4 antibody.



Explore. Bioreagents.

www.biorbyt.com