

**PIX $\beta$  rabbit pAb****Cat#: orb770773 (Manual)**

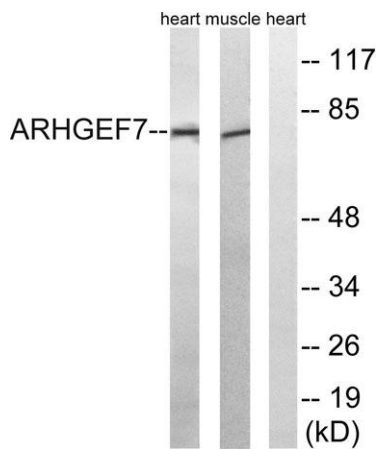
For research use only. Not intended for diagnostic use.

<b>Product Name</b>	PIX $\beta$ rabbit pAb
<b>Host species</b>	Rabbit
<b>Applications</b>	WB;IHC;IF;ELISA
<b>Species Cross-Reactivity</b>	Human;Mouse;Rat
<b>Recommended dilutions</b>	Western Blot: 1/500 - 1/2000. Immunohistochemistry: 1/100 - 1/300. ELISA: 1/5000. Not yet tested in other applications.
<b>Immunogen</b>	The antiserum was produced against synthesized peptide derived from human ARHGEF7. AA range:311-360
<b>Specificity</b>	PIX $\beta$ Polyclonal Antibody detects endogenous levels of PIX $\beta$ protein.
<b>Formulation</b>	Liquid in PBS containing 50% glycerol, 0.5% BSA and 0.02% sodium azide..
<b>Storage</b>	Store at -20°C. Avoid repeated freeze-thaw cycles.
<b>Protein Name</b>	Rho guanine nucleotide exchange factor 7
<b>Gene Name</b>	ARHGEF7
<b>Cellular localization</b>	Cell junction, focal adhesion . Cell projection, ruffle . Cytoplasm, cell cortex . Cell projection, lamellipodium . Detected at cell adhesions. A small proportion is detected at focal adhesions.
<b>Purification</b>	The antibody was affinity-purified from rabbit antiserum by affinity-chromatography using epitope-specific immunogen.

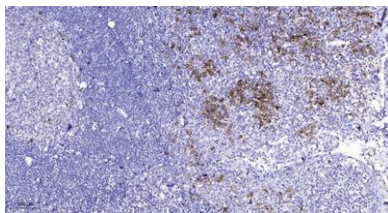
<b>Clonality</b>	Polyclonal
<b>Concentration</b>	1 mg/ml
<b>Observed band</b>	80kD
<b>Human Gene ID</b>	8874
<b>Human Swiss-Prot Number</b>	Q14155
<b>Alternative Names</b>	ARHGEF7; COOL1; KIAA0142; P85SPR; PAK3BP; PIXB; Nbla10314; Rho guanine nucleotide exchange factor 7; Beta-Pix; COOL-1; PAK-interacting exchange factor beta; p85

## Background

This gene encodes a protein that belongs to a family of cytoplasmic proteins that activate the Ras-like family of Rho proteins by exchanging bound GDP for GTP. It forms a complex with the small GTP binding protein Rac1 and recruits Rac1 to membrane ruffles and to focal adhesions. Multiple alternatively spliced transcript variants encoding different isoforms have been observed for this gene. [provided by RefSeq, Mar 2016],



**Western blot analysis of lysates from rat muscle and rat heart cells, using ARHGEF7 Antibody. The lane on the right is blocked with the synthesized peptide.**



**Immunohistochemical analysis of paraffin-embedded human tonsil. 1, Antibody was diluted at 1:200(4° overnight). 2, Tris-EDTA,pH9.0 was used for antigen retrieval. 3,Secondary antibody was diluted at 1:200(room temperature, 45min).**



Explore. Bioreagents.

[www.biorbyt.com](http://www.biorbyt.com)