

GGH rabbit pAb**Cat#: orb770760 (Manual)**

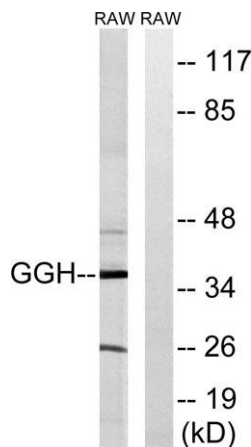
For research use only. Not intended for diagnostic use.

Product Name	GGH rabbit pAb
Host species	Rabbit
Applications	WB;IHC;IF;ELISA
Species Cross-Reactivity	Human;Rat;Mouse;
Recommended dilutions	Western Blot: 1/500 - 1/2000. Immunohistochemistry: 1/100 - 1/300. ELISA: 1/10000. Not yet tested in other applications.
Immunogen	The antiserum was produced against synthesized peptide derived from human GGH. AA range:251-300
Specificity	GGH Polyclonal Antibody detects endogenous levels of GGH protein.
Formulation	Liquid in PBS containing 50% glycerol, 0.5% BSA and 0.02% sodium azide..
Storage	Store at -20°C. Avoid repeated freeze-thaw cycles.
Protein Name	Gamma-glutamyl hydrolase
Gene Name	GGH
Cellular localization	Secreted, extracellular space . Lysosome . Melanosome . While its intracellular location is primarily the lysosome, most of the enzyme activity is secreted. Identified by mass spectrometry in melanosome fractions from stage I to stage IV. .
Purification	The antibody was affinity-purified from rabbit antiserum by affinity-chromatography using epitope-specific immunogen.

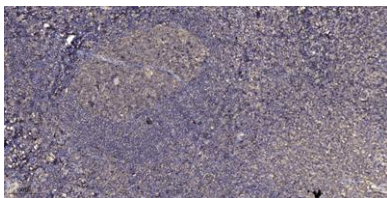
Clonality	Polyclonal
Concentration	1 mg/ml
Observed band	36kD
Human Gene ID	8836
Human Swiss-Prot Number	Q92820
Alternative Names	GGH; Gamma-glutamyl hydrolase; Conjugase; GH; Gamma-Glu-X carboxypeptidase

Background

This gene catalyzes the hydrolysis of folylpoly-gamma-glutamates and antifolylpoly-gamma-glutamates by the removal of gamma-linked polyglutamates and glutamate. [provided by RefSeq, Jul 2008],



Western blot analysis of lysates from RAW264.7 cells, using GGH Antibody. The lane on the right is blocked with the synthesized peptide.



Immunohistochemical analysis of paraffin-embedded human tonsil. 1, Antibody was diluted at 1:200(4° overnight). 2, Tris-EDTA,pH9.0 was used for antigen retrieval. 3,Secondary antibody was diluted at 1:200(room temperature, 30min).