

**RIP2 (phospho Ser176) rabbit pAb****Cat#: orb770748 (Manual)**

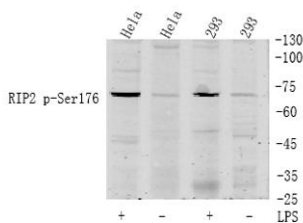
For research use only. Not intended for diagnostic use.

<b>Product Name</b>	RIP2 (phospho Ser176) rabbit pAb
<b>Host species</b>	Rabbit
<b>Applications</b>	WB;IHC;IF;ELISA
<b>Species Cross-Reactivity</b>	Human;Mouse
<b>Recommended dilutions</b>	Western Blot: 1/500 - 1/2000. Immunohistochemistry: 1/100 - 1/300. ELISA: 1/40000. Not yet tested in other applications.
<b>Immunogen</b>	The antiserum was produced against synthesized peptide derived from human RIPK2 around the phosphorylation site of Ser176. AA range:146-195
<b>Specificity</b>	Phospho-RIP2 (S176) Polyclonal Antibody detects endogenous levels of RIP2 protein only when phosphorylated at S176.
<b>Formulation</b>	Liquid in PBS containing 50% glycerol, 0.5% BSA and 0.02% sodium azide..
<b>Storage</b>	Store at -20°C. Avoid repeated freeze-thaw cycles.
<b>Protein Name</b>	Receptor-interacting serine/threonine-protein kinase 2
<b>Gene Name</b>	RIPK2
<b>Cellular localization</b>	Cytoplasm .
<b>Purification</b>	The antibody was affinity-purified from rabbit antiserum by affinity-chromatography using epitope-specific immunogen.
<b>Clonality</b>	Polyclonal

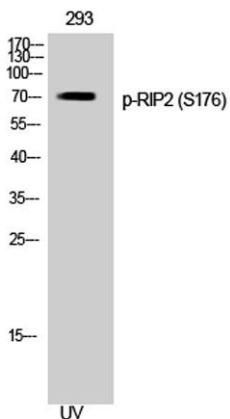
Explore. Bioreagents.

<b>Concentration</b>	1 mg/ml
<b>Observed band</b>	70kD
<b>Human Gene ID</b>	8767
<b>Human Swiss-Prot Number</b>	O43353
<b>Alternative Names</b>	RIPK2; CARDIAK; RICK; RIP2; Receptor-interacting serine/threonine-protein kinase 2; CARD-containing interleukin-1 beta-converting enzyme-associated kinase; CARD-containing IL-1 beta ICE-kinase; RIP-like-interacting CLARP kinase; Receptor-in

**Background** This gene encodes a member of the receptor-interacting protein (RIP) family of serine/threonine protein kinases. The encoded protein contains a C-terminal caspase activation and recruitment domain (CARD), and is a component of signaling complexes in both the innate and adaptive immune pathways. It is a potent activator of NF-kappaB and inducer of apoptosis in response to various stimuli. [provided by RefSeq, Jul 2008],

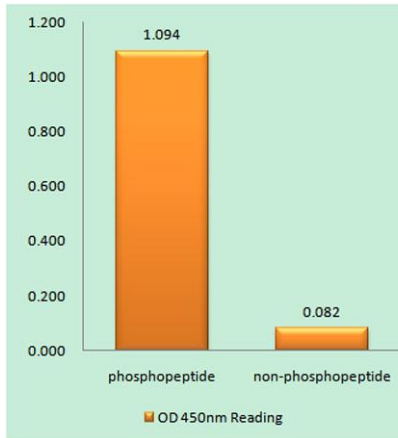


**Western Blot analysis of cell lysis treated or untreated by LPS 100ng/mL 30min, using primary antibody at 1:1000 dilution. Secondary antibody(catalog#:RS23920) was diluted at 1:10000**

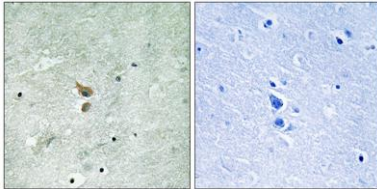


**Western Blot analysis of 293 cells using Phospho-RIP2 (S176) Polyclonal Antibody**

Explore. Bioreagents.



**Enzyme-Linked Immunosorbent Assay (Phospho-ELISA) for Immunogen Phosphopeptide (Phospho-left) and Non-Phosphopeptide (Phospho-right), using RIPK2 (Phospho-Ser176) Antibody**



**Immunohistochemistry analysis of paraffin-embedded human brain, using RIPK2 (Phospho-Ser176) Antibody. The picture on the right is blocked with the phosphopeptide.**