

**RMP rabbit pAb****Cat#: orb770743 (Manual)**

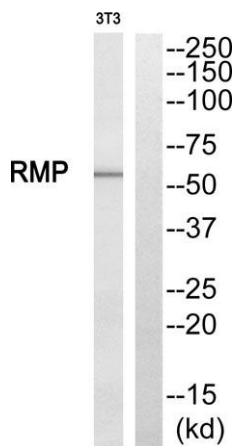
For research use only. Not intended for diagnostic use.

<b>Product Name</b>	RMP rabbit pAb
<b>Host species</b>	Rabbit
<b>Applications</b>	WB;IHC;IF;ELISA
<b>Species Cross-Reactivity</b>	Human;Rat;Mouse;
<b>Recommended dilutions</b>	Western Blot: 1/500 - 1/2000. Immunohistochemistry: 1/100 - 1/300. ELISA: 1/40000. Not yet tested in other applications.
<b>Immunogen</b>	The antiserum was produced against synthesized peptide derived from human RMP. AA range:415-464
<b>Specificity</b>	RMP Polyclonal Antibody detects endogenous levels of RMP protein.
<b>Formulation</b>	Liquid in PBS containing 50% glycerol, 0.5% BSA and 0.02% sodium azide..
<b>Storage</b>	Store at -20°C. Avoid repeated freeze-thaw cycles.
<b>Protein Name</b>	Unconventional prefoldin RPB5 interactor 1
<b>Gene Name</b>	URI1
<b>Cellular localization</b>	Nucleus. Cytoplasm. Mitochondrion. Cell projection, dendrite . Colocalizes with PFDN2, PFDN4, PPP1CC, RPS6KB1 and STAP1 at mitochondrion.
<b>Purification</b>	The antibody was affinity-purified from rabbit antiserum by affinity-chromatography using epitope-specific immunogen.
<b>Clonality</b>	Polyclonal

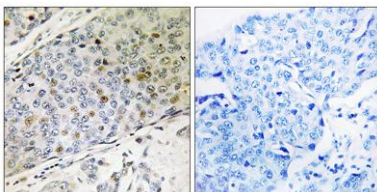
<b>Concentration</b>	1 mg/ml
<b>Observed band</b>	56kD
<b>Human Gene ID</b>	8725
<b>Human Swiss-Prot Number</b>	O94763
<b>Alternative Names</b>	URI1; C19orf2; NNX3; PPP1R19; RMP; URI; Unconventional prefoldin RPB5 interactor 1; Protein NNX3; Protein phosphatase 1 regulatory subunit 19; RNA polymerase II subunit 5-mediating protein; RPB5-mediating protein

**Background**

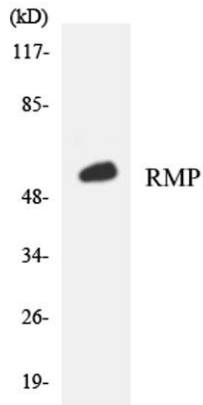
This gene encodes member of the prefoldin family of molecular chaperones. The encoded protein functions as a scaffolding protein and plays roles in ubiquitination and transcription, in part through interactions with the RNA polymerase II subunit RPB5. This gene may play a role in multiple malignancies including ovarian cancer and hepatocellular carcinoma. Alternatively spliced transcript variants encoding multiple isoforms have been observed for this gene, and a pseudogene of this gene is located on the long arm of chromosome 22. [provided by RefSeq, Nov 2011],



**Western blot analysis of RMP Antibody. The lane on the right is blocked with the RMP peptide.**



**Immunohistochemistry analysis of paraffin-embedded human breast carcinoma, using RMP Antibody. The lane on the right is blocked with the RMP peptide.**



Western blot analysis of the lysates from K562 cells using RMP antibody.