

**Megsin rabbit pAb****Cat#: orb770739 (Manual)**

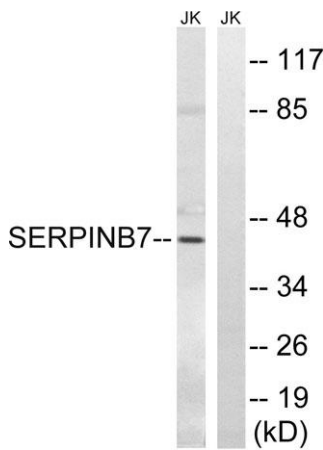
For research use only. Not intended for diagnostic use.

<b>Product Name</b>	Megsin rabbit pAb
<b>Host species</b>	Rabbit
<b>Applications</b>	WB;ELISA
<b>Species Cross-Reactivity</b>	Human;Rat;Mouse;
<b>Recommended dilutions</b>	Western Blot: 1/500 - 1/2000. ELISA: 1/20000. Not yet tested in other applications.
<b>Immunogen</b>	The antiserum was produced against synthesized peptide derived from human SERPINB7. AA range:111-160
<b>Specificity</b>	Megsin Polyclonal Antibody detects endogenous levels of Megsin protein.
<b>Formulation</b>	Liquid in PBS containing 50% glycerol, 0.5% BSA and 0.02% sodium azide..
<b>Storage</b>	Store at -20°C. Avoid repeated freeze-thaw cycles.
<b>Protein Name</b>	Serpin B7
<b>Gene Name</b>	SERPINB7
<b>Cellular localization</b>	Cytoplasm .
<b>Purification</b>	The antibody was affinity-purified from rabbit antiserum by affinity-chromatography using epitope-specific immunogen.
<b>Clonality</b>	Polyclonal

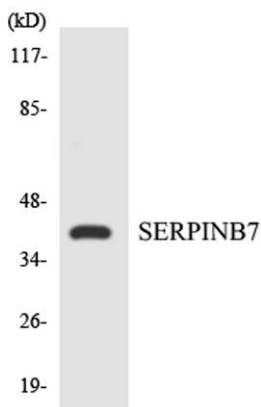
<b>Concentration</b>	1 mg/ml
<b>Observed band</b>	43kD
<b>Human Gene ID</b>	8710
<b>Human Swiss-Prot Number</b>	O75635
<b>Alternative Names</b>	SERPINB7; Serpin B7; Megsin; TP55

**Background**

This gene encodes a member of a family of proteins which function as protease inhibitors. Expression of this gene is upregulated in IgA nephropathy and mutations have been found to cause palmoplantar keratoderma, Nagashima type. Alternative splicing results in multiple transcript variants. [provided by RefSeq, Jun 2014],



Western blot analysis of lysates from Jurkat cells, using SERPINB7 Antibody. The lane on the right is blocked with the synthesized peptide.



Western blot analysis of the lysates from Jurkat cells using SERPINB7 antibody.