

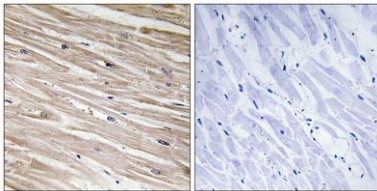
PEA-15 (phospho Ser104) rabbit pAb**Cat#: orb770730 (Manual)**

For research use only. Not intended for diagnostic use.

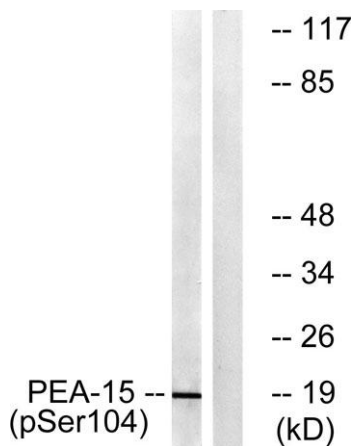
Product Name	PEA-15 (phospho Ser104) rabbit pAb
Host species	Rabbit
Applications	WB;IHC;IF;ELISA
Species Cross-Reactivity	Human;Mouse;Rat;Monkey
Recommended dilutions	Western Blot: 1/500 - 1/2000. Immunohistochemistry: 1/100 - 1/300. ELISA: 1/20000. Not yet tested in other applications.
Immunogen	The antiserum was produced against synthesized peptide derived from human PEA-15 around the phosphorylation site of Ser104. AA range:70-119
Specificity	Phospho-PEA-15 (S104) Polyclonal Antibody detects endogenous levels of PEA-15 protein only when phosphorylated at S104.
Formulation	Liquid in PBS containing 50% glycerol, 0.5% BSA and 0.02% sodium azide..
Storage	Store at -20°C. Avoid repeated freeze-thaw cycles.
Protein Name	Astrocytic phosphoprotein PEA-15
Gene Name	PEA15
Cellular localization	Cytoplasm. Associated with microtubules.
Purification	The antibody was affinity-purified from rabbit antiserum by affinity-chromatography using epitope-specific immunogen.
Clonality	Polyclonal

Concentration	1 mg/ml
Observed band	19kD
Human Gene ID	8682
Human Swiss-Prot Number	Q15121
Alternative Names	PEA15; Astrocytic phosphoprotein PEA-15; 15 kDa phosphoprotein enriched in astrocytes; Phosphoprotein enriched in diabetes; PED

Background phosphoprotein enriched in astrocytes 15(PEA15) Homo sapiens This gene encodes a death effector domain-containing protein that functions as a negative regulator of apoptosis. The encoded protein is an endogenous substrate for protein kinase C. This protein is also overexpressed in type 2 diabetes mellitus, where it may contribute to insulin resistance in glucose uptake. Alternative splicing results in multiple transcript variants. [provided by RefSeq, Jul 2014],



Immunohistochemistry analysis of paraffin-embedded human heart, using PEA-15 (Phospho-Ser104) Antibody. The picture on the right is blocked with the phospho peptide.



Western blot analysis of lysates from COS7 cells treated with TNF 20ng/ml 5', using PEA-15 (Phospho-Ser104) Antibody. The lane on the right is blocked with the phospho peptide.



Explore. Bioreagents.

www.biorbyt.com