

Mnk1 (phospho Thr385) rabbit pAb**Cat#: orb770698 (Manual)**

For research use only. Not intended for diagnostic use.

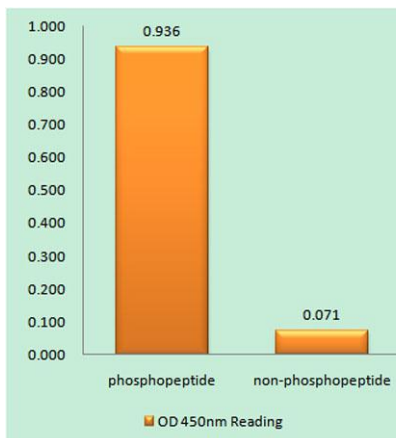
Product Name	Mnk1 (phospho Thr385) rabbit pAb
Host species	Rabbit
Applications	WB;IHC;IF;ELISA
Species Cross-Reactivity	Human;Mouse;Rat
Recommended dilutions	Western Blot: 1/500 - 1/2000. Immunohistochemistry: 1/100 - 1/300. ELISA: 1/20000. Not yet tested in other applications.
Immunogen	The antiserum was produced against synthesized peptide derived from human Mnk1 around the phosphorylation site of Thr385. AA range:351-400
Specificity	Phospho-Mnk1 (T385) Polyclonal Antibody detects endogenous levels of Mnk1 protein only when phosphorylated at T385.
Formulation	Liquid in PBS containing 50% glycerol, 0.5% BSA and 0.02% sodium azide..
Storage	Store at -20°C. Avoid repeated freeze-thaw cycles.
Protein Name	MAP kinase-interacting serine/threonine-protein kinase 1
Gene Name	MKNK1
Cellular localization	[Isoform 2]: Cytoplasm.; [Isoform 3]: Cytoplasm. Nucleus.
Purification	The antibody was affinity-purified from rabbit antiserum by affinity-chromatography using epitope-specific immunogen.
Clonality	Polyclonal

Explore. Bioreagents.

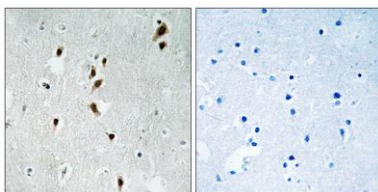
Concentration	1 mg/ml
Observed band	42kD
Human Gene ID	8569
Human Swiss-Prot Number	Q9BUB5
Alternative Names	MKNK1; MNK1; MAP kinase-interacting serine/threonine-protein kinase 1; MAP kinase signal-integrating kinase 1; MAPK signal-integrating kinase 1; Mnk1

Background

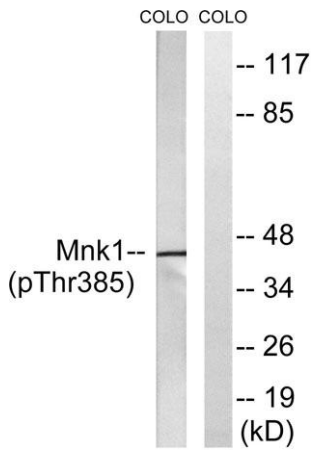
MAP kinase interacting serine/threonine kinase 1(MKNK1) Homo sapiens
 This gene encodes a Ser/Thr protein kinase that interacts with, and is activated by ERK1 and p38 mitogen-activated protein kinases, and thus may play a role in the response to environmental stress and cytokines. This kinase may also regulate transcription by phosphorylating eIF4E via interaction with the C-terminal region of eIF4G. Alternatively spliced transcript variants have been noted for this gene. [provided by RefSeq, Jan 2012],



Enzyme-Linked Immunosorbent Assay (Phospho-ELISA) for Immunogen Phosphopeptide (Phospho-left) and Non-Phosphopeptide (Phospho-right), using Mnk1 (Phospho-Thr385) Antibody



Immunohistochemistry analysis of paraffin-embedded human brain, using Mnk1 (Phospho-Thr385) Antibody. The picture on the right is blocked with the phospho peptide.



Western blot analysis of lysates from COLO205 cells treated with PMA 125ng/ml 30', using Mnk1 (Phospho-Thr385) Antibody. The lane on the right is blocked with the phospho peptide.