

**AGXT2L2 rabbit pAb****Cat#: orb770671 (Manual)**

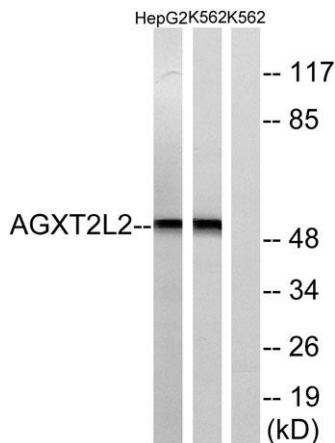
For research use only. Not intended for diagnostic use.

<b>Product Name</b>	AGXT2L2 rabbit pAb
<b>Host species</b>	Rabbit
<b>Applications</b>	WB;IHC;IF;ELISA
<b>Species Cross-Reactivity</b>	Human;Mouse;Rat
<b>Recommended dilutions</b>	Western Blot: 1/500 - 1/2000. Immunohistochemistry: 1/100 - 1/300. ELISA: 1/10000. Not yet tested in other applications.
<b>Immunogen</b>	The antiserum was produced against synthesized peptide derived from human AGXT2L2. AA range:341-390
<b>Specificity</b>	AGXT2L2 Polyclonal Antibody detects endogenous levels of AGXT2L2 protein.
<b>Formulation</b>	Liquid in PBS containing 50% glycerol, 0.5% BSA and 0.02% sodium azide..
<b>Storage</b>	Store at -20°C. Avoid repeated freeze-thaw cycles.
<b>Protein Name</b>	5-phosphohydroxy-L-lysine phospho-lyase
<b>Gene Name</b>	AGXT2L2
<b>Cellular localization</b>	Mitochondrion .
<b>Purification</b>	The antibody was affinity-purified from rabbit antiserum by affinity-chromatography using epitope-specific immunogen.
<b>Clonality</b>	Polyclonal

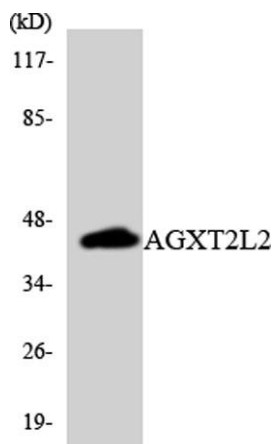
<b>Concentration</b>	1 mg/ml
<b>Observed band</b>	50kD
<b>Human Gene ID</b>	85007
<b>Human Swiss-Prot Number</b>	Q8IUZ5
<b>Alternative Names</b>	AGXT2L2; PP9286; 5-phosphohydroxy-L-lysine phospho-lyase; Alanine--glyoxylate aminotransferase 2-like 2

## Background

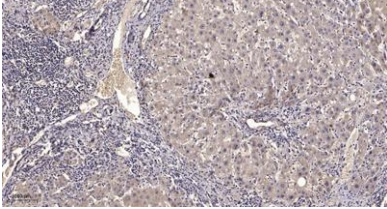
5-phosphohydroxy-L-lysine phospho-lyase(PHYKPL) Homo sapiens  
This is a nuclear gene encoding a mitochondrial enzyme that catalyzes the conversion of 5-phosphonooxy-L-lysine to ammonia, inorganic phosphate, and 2-aminoadipate semialdehyde. Mutations in this gene may cause phosphohydroxylysinuria. Alternative splicing results in multiple transcript variants. [provided by RefSeq, May 2013],



Western blot analysis of lysates from K562 and HepG2 cells, using AGXT2L2 Antibody. The lane on the right is blocked with the synthesized peptide.



Western blot analysis of the lysates from HUVEC cells using AGXT2L2 antibody.



**Immunohistochemical analysis of paraffin-embedded human liver cancer. 1, Antibody was diluted at 1:200(4° overnight). 2, Tris-EDTA,pH9.0 was used for antigen retrieval. 3,Secondary antibody was diluted at 1:200(room temperature, 45min).**