

Rab 2B rabbit pAb**Cat#: orb770663 (Manual)**

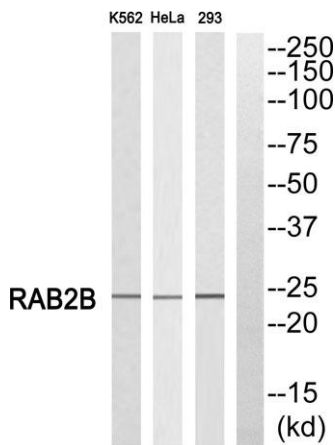
For research use only. Not intended for diagnostic use.

Product Name	Rab 2B rabbit pAb
Host species	Rabbit
Applications	WB; ELISA;IHC
Species Cross-Reactivity	Human;Mouse;Rat
Recommended dilutions	WB 1:500-2000;IHC-p 1:50-300; ELISA 2000-20000
Immunogen	The antiserum was produced against synthesized peptide derived from human RAB2B. AA range:103-152
Specificity	Rab 2B Polyclonal Antibody detects endogenous levels of Rab 2B protein.
Formulation	Liquid in PBS containing 50% glycerol, 0.5% BSA and 0.02% sodium azide..
Storage	Store at -20°C. Avoid repeated freeze-thaw cycles.
Protein Name	Ras-related protein Rab-2B
Gene Name	RAB2B
Cellular localization	Cell membrane ; Lipid-anchor ; Cytoplasmic side . Endoplasmic reticulum membrane ; Lipid-anchor . Golgi apparatus membrane ; Lipid-anchor . Cytoplasmic vesicle, secretory vesicle, acrosome . Localized in the Golgi apparatus in the round spermatids and in the acrosome in the elongating spermatid. .
Purification	The antibody was affinity-purified from rabbit antiserum by affinity-chromatography using epitope-specific immunogen.

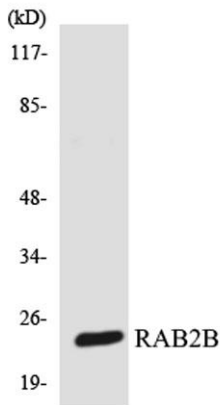
Clonality	Polyclonal
Concentration	1 mg/ml
Observed band	24kD
Human Gene ID	84932
Human Swiss-Prot Number	Q8WUD1
Alternative Names	RAB2B; Ras-related protein Rab-2B

Background

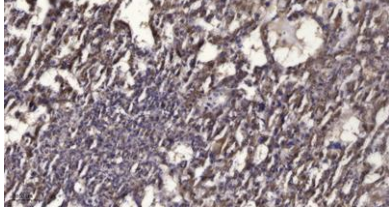
Members of the Rab protein family are nontransforming monomeric GTP-binding proteins of the Ras superfamily that contain 4 highly conserved regions involved in GTP binding and hydrolysis. Rab proteins are prenylated, membrane-bound proteins involved in vesicular fusion and trafficking; see MIM 179508.[supplied by OMIM, Apr 2006].



Western blot analysis of RAB2B Antibody. The lane on the right is blocked with the RAB2B peptide.



Western blot analysis of the lysates from 293 cells using RAB2B antibody.



Immunohistochemical analysis of paraffin-embedded human liver cancer. 1, Antibody was diluted at 1:200(4° overnight). 2, Tris-EDTA,pH9.0 was used for antigen retrieval. 3,Secondary antibody was diluted at 1:200(room temperature, 45min).