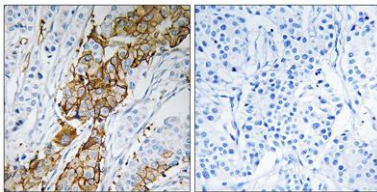


**USP32 rabbit pAb****Cat#: orb770648 (Manual)**

For research use only. Not intended for diagnostic use.

<b>Product Name</b>	USP32 rabbit pAb
<b>Host species</b>	Rabbit
<b>Applications</b>	IHC;IF;WB;ELISA
<b>Species Cross-Reactivity</b>	Human;Mouse
<b>Recommended dilutions</b>	WB 1:500-2000 Immunohistochemistry: 1/100 - 1/300. ELISA: 1/40000. Not yet tested in other applications.
<b>Immunogen</b>	The antiserum was produced against synthesized peptide derived from human USP32. AA range:271-320
<b>Specificity</b>	USP32 Polyclonal Antibody detects endogenous levels of USP32 protein.
<b>Formulation</b>	Liquid in PBS containing 50% glycerol, 0.5% BSA and 0.02% sodium azide..
<b>Storage</b>	Store at -20°C. Avoid repeated freeze-thaw cycles.
<b>Protein Name</b>	Ubiquitin carboxyl-terminal hydrolase 32
<b>Gene Name</b>	USP32
<b>Cellular localization</b>	Membrane ; Lipid-anchor . Golgi apparatus .
<b>Purification</b>	The antibody was affinity-purified from rabbit antiserum by affinity-chromatography using epitope-specific immunogen.
<b>Clonality</b>	Polyclonal

<b>Concentration</b>	1 mg/ml
<b>Observed band</b>	180kD
<b>Human Gene ID</b>	84669
<b>Human Swiss-Prot Number</b>	Q8NFA0
<b>Alternative Names</b>	USP32; USP10; Ubiquitin carboxyl-terminal hydrolase 32; Deubiquitinating enzyme 32; Renal carcinoma antigen NY-REN-60; Ubiquitin thioesterase 32; Ubiquitin-specific-processing protease 32
<b>Background</b>	catalytic activity:Ubiquitin C-terminal thioester + H(2)O = ubiquitin + a thiol.,similarity:Belongs to the peptidase C19 family.,similarity:Contains 1 DUSP domain.,similarity:Contains 3 EF-hand domains.,



**Immunohistochemistry analysis of paraffin-embedded human breast carcinoma tissue, using USP32 Antibody. The picture on the right is blocked with the synthesized peptide.**