

NIFK rabbit pAb**Cat#: orb770629 (Manual)**

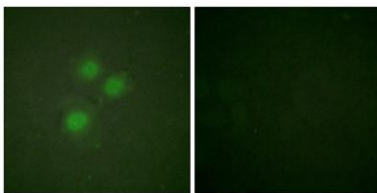
For research use only. Not intended for diagnostic use.

Product Name	NIFK rabbit pAb
Host species	Rabbit
Applications	IHC;IF;WB;ELISA
Species Cross-Reactivity	Human;Mouse
Recommended dilutions	WB 1:500-2000 Immunohistochemistry: 1/100 - 1/300. Immunofluorescence: 1/200 - 1/1000. ELISA: 1/5000. Not yet tested in other applications.
Immunogen	The antiserum was produced against synthesized peptide derived from human NIFK. AA range:200-249
Specificity	NIFK Polyclonal Antibody detects endogenous levels of NIFK protein.
Formulation	Liquid in PBS containing 50% glycerol, 0.5% BSA and 0.02% sodium azide..
Storage	Store at -20°C. Avoid repeated freeze-thaw cycles.
Protein Name	MKI67 FHA domain-interacting nucleolar phosphoprotein
Gene Name	MKI67IP
Cellular localization	Nucleus, nucleolus. Chromosome. Localizes to mitotic chromosomes in conjunction with MKI67.
Purification	The antibody was affinity-purified from rabbit antiserum by affinity-chromatography using epitope-specific immunogen.
Clonality	Polyclonal

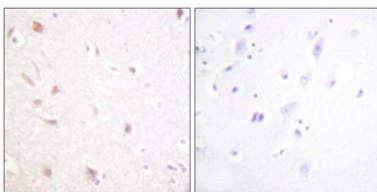
Concentration	1 mg/ml
Observed band	34kD
Human Gene ID	84365
Human Swiss-Prot Number	Q9BYG3
Alternative Names	MKI67IP; NIFK; NOPP34; MKI67 FHA domain-interacting nucleolar phosphoprotein; Nucleolar phosphoprotein Nopp34; Nucleolar protein interacting with the FHA domain of pKI-67; hNIFK

Background

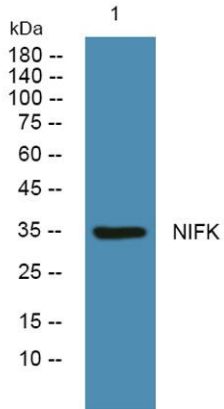
This gene encodes a protein that interacts with the forkhead-associated domain of the Ki-67 antigen. The encoded protein may bind RNA and may play a role in mitosis and cell cycle progression. Multiple pseudogenes exist on chromosomes 5, 10, 12, 15, and 19.[provided by RefSeq, Jan 2009],



Immunofluorescence analysis of HUVEC cells, using NIFK Antibody. The picture on the right is blocked with the synthesized peptide.



Immunohistochemistry analysis of paraffin-embedded human brain tissue, using NIFK Antibody. The picture on the right is blocked with the synthesized peptide.



Western blot analysis of lysates from K562 cells, primary antibody was diluted at 1:1000, 4° over night