

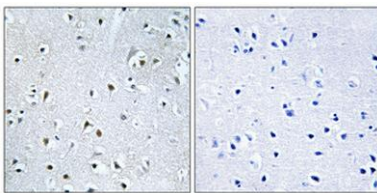
POLDIP3 rabbit pAb**Cat#: orb770622 (Manual)**

For research use only. Not intended for diagnostic use.

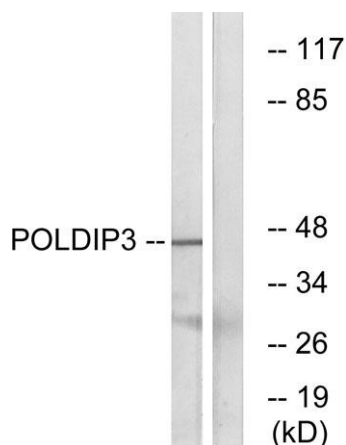
Product Name	POLDIP3 rabbit pAb
Host species	Rabbit
Applications	WB;IHC;IF;ELISA
Species Cross-Reactivity	Human;Rat;Mouse;
Recommended dilutions	Western Blot: 1/500 - 1/2000. Immunohistochemistry: 1/100 - 1/300. ELISA: 1/40000. Not yet tested in other applications.
Immunogen	The antiserum was produced against synthesized peptide derived from human POLDIP3. AA range:348-397
Specificity	POLDIP3 Polyclonal Antibody detects endogenous levels of POLDIP3 protein.
Formulation	Liquid in PBS containing 50% glycerol, 0.5% BSA and 0.02% sodium azide..
Storage	Store at -20°C. Avoid repeated freeze-thaw cycles.
Protein Name	Polymerase delta-interacting protein 3
Gene Name	POLDIP3
Cellular localization	Nucleus. Nucleus speckle. Cytoplasm. Nucleocytoplasmic shuttling protein.
Purification	The antibody was affinity-purified from rabbit antiserum by affinity-chromatography using epitope-specific immunogen.
Clonality	Polyclonal

Concentration	1 mg/ml
Observed band	46kD
Human Gene ID	84271
Human Swiss-Prot Number	Q9BY77
Alternative Names	POLDIP3; KIAA1649; PDIP46; Polymerase delta-interacting protein 3; 46 kDa DNA polymerase delta interaction protein; p46; S6K1 Aly/REF-like target; SKAR

Background This gene encodes an RRM (RNA recognition motif)-containing protein that participates in the regulation of translation by recruiting ribosomal protein S6 kinase beta-1 to mRNAs. Alternative splicing results in multiple transcript variants. [provided by RefSeq, Jul 2013],



Immunohistochemical analysis of paraffin-embedded Human brain. Antibody was diluted at 1:100(4° overnight). High-pressure and temperature Tris-EDTA,pH8.0 was used for antigen retrieval. Negative ctrl (right) obtained from antibody was pre-absorbed by i



Western blot analysis of lysates from RAW264.7 cells, using POLDIP3 Antibody. The lane on the right is blocked with the synthesized peptide.