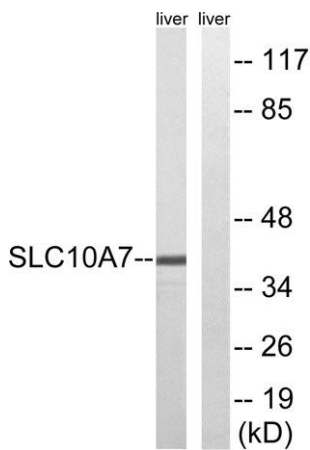


SLC10A7 rabbit pAb**Cat#: orb770600 (Manual)**

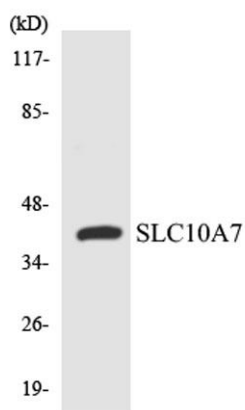
For research use only. Not intended for diagnostic use.

Product Name	SLC10A7 rabbit pAb
Host species	Rabbit
Applications	WB;ELISA;IHC
Species Cross-Reactivity	Human;Mouse;Rat
Recommended dilutions	WB 1:500-2000;IHC-p 1:50-300; ELISA 2000-20000
Immunogen	The antiserum was produced against synthesized peptide derived from human SLC10A7. AA range:168-217
Specificity	SLC10A7 Polyclonal Antibody detects endogenous levels of SLC10A7 protein.
Formulation	Liquid in PBS containing 50% glycerol, 0.5% BSA and 0.02% sodium azide..
Storage	Store at -20°C. Avoid repeated freeze-thaw cycles.
Protein Name	Sodium/bile acid cotransporter 7
Gene Name	SLC10A7
Cellular localization	Cell membrane ; Multi-pass membrane protein . Endoplasmic reticulum membrane ; Multi-pass membrane protein . Golgi apparatus membrane .
Purification	The antibody was affinity-purified from rabbit antiserum by affinity-chromatography using epitope-specific immunogen.
Clonality	Polyclonal

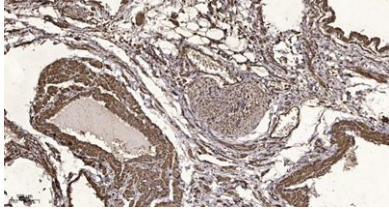
Concentration	1 mg/ml
Observed band	39kD
Human Gene ID	84068
Human Swiss-Prot Number	Q0GE19
Alternative Names	SLC10A7; C4orf13; P7; PSEC0051; Sodium/bile acid cotransporter 7; Na(+)/bile acid cotransporter 7; Solute carrier family 10 member 7
Background	similarity:Belongs to the sodium:bile acid symporter family.,



Western blot analysis of lysates from mouse liver, using SLC10A7 Antibody. The lane on the right is blocked with the synthesized peptide.



Western blot analysis of the lysates from 293 cells using SLC10A7 antibody.



Immunohistochemical analysis of paraffin-embedded human oophoroma. 1, Antibody was diluted at 1:200(4° overnight). 2, Tris-EDTA,pH9.0 was used for antigen retrieval. 3,Secondary antibody was diluted at 1:200(room temperature, 45min).