

Reg IV rabbit pAb**Cat#: orb770598 (Manual)**

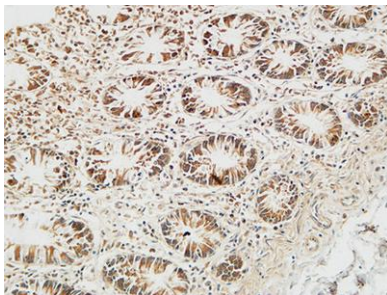
For research use only. Not intended for diagnostic use.

Product Name	Reg IV rabbit pAb
Host species	Rabbit
Applications	WB;IHC;IF;ELISA
Species Cross-Reactivity	Human;Rat;Mouse;
Recommended dilutions	Immunohistochemistry: 1/100 - 1/300. ELISA: 1/40000. Not yet tested in other applications.
Immunogen	Synthesized peptide derived from the Internal region of human Reg IV.
Specificity	Reg IV Polyclonal Antibody detects endogenous levels of Reg IV protein.
Formulation	Liquid in PBS containing 50% glycerol, 0.5% BSA and 0.02% sodium azide..
Storage	Store at -20°C. Avoid repeated freeze-thaw cycles.
Protein Name	Regenerating islet-derived protein 4
Gene Name	REG4
Cellular localization	Secreted .
Purification	The antibody was affinity-purified from rabbit antiserum by affinity-chromatography using epitope-specific immunogen.
Clonality	Polyclonal

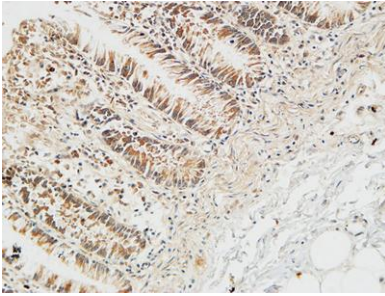
Concentration	1 mg/ml
Observed band	
Human Gene ID	83998
Human Swiss-Prot Number	Q9BYZ8
Alternative Names	REG4; GISP; RELP; Regenerating islet-derived protein 4; REG-4; Gastrointestinal secretory protein; REG-like protein; Regenerating islet-derived protein IV; Reg IV

Background

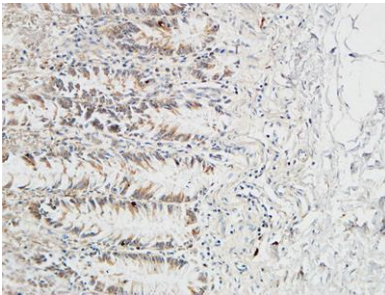
function:May be involved in inflammatory and metaplastic responses of the gastrointestinal epithelium.,**induction:**Up-regulated by mucosal injury from active Crohn's disease or ulcerative colitis. Up-regulated in colorectal tumors. Up-regulated in epithelial cells at regenerating margins of peptic ulcers in the stomach and duodenum.,**online information:**Regenerating protein IV,**similarity:**Contains 1 C-type lectin domain.,**tissue specificity:**Highly expressed in the gastrointestinal tract including the duodenum, jejunum, ileum, ileocecum, appendix, descending colon, pancreas and small intestine. Weakly expressed in normal colon and stomach. Strongly expressed in most colorectal tumors than in normal colon. Preferentially expressed in mucinous tumors and in some cases neuro-endocrine tumors. Expressed in mucus-secreting cells and enterocyte-like cells. In small intestine expressed at the basal perinuclear zone of goblet cells.,



Immunohistochemical analysis of paraffin-embedded Human colon. 1, Antibody was diluted at 1:100(4° overnight). 2, High-pressure and temperature EDTA, pH8.0 was used for antigen retrieval. 3,Secondary antibody was diluted at 1:200(room temperature, 30min)



Immunohistochemical analysis of paraffin-embedded Human colon. 1, Antibody was diluted at 1:100(4° overnight). 2, High-pressure and temperature EDTA, pH8.0 was used for antigen retrieval. 3,Secondary antibody was diluted at 1:200(room temperature, 30min)



Immunohistochemical analysis of paraffin-embedded Human colon. 1, Antibody was diluted at 1:100(4° overnight). 2, High-pressure and temperature EDTA, pH8.0 was used for antigen retrieval. 3,Secondary antibody was diluted at 1:200(room temperature, 30min)