

AIP4 (phospho Tyr420) rabbit pAb**Cat#: orb770581 (Manual)**

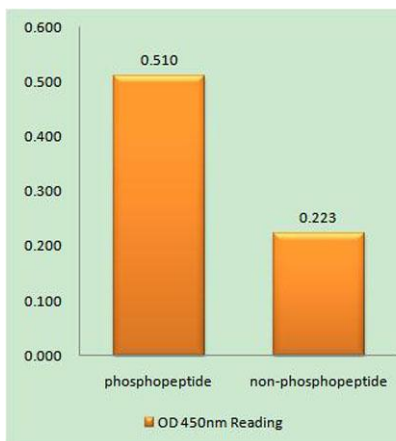
For research use only. Not intended for diagnostic use.

Product Name	AIP4 (phospho Tyr420) rabbit pAb
Host species	Rabbit
Applications	IHC;IF;ELISA
Species Cross-Reactivity	Human;Mouse
Recommended dilutions	Immunohistochemistry: 1/100 - 1/300. ELISA: 1/20000. Not yet tested in other applications.
Immunogen	The antiserum was produced against synthesized peptide derived from human ITCH around the phosphorylation site of Tyr420. AA range:386-435
Specificity	Phospho-AIP4 (Y420) Polyclonal Antibody detects endogenous levels of AIP4 protein only when phosphorylated at Y420.
Formulation	Liquid in PBS containing 50% glycerol, 0.5% BSA and 0.02% sodium azide..
Storage	Store at -20°C. Avoid repeated freeze-thaw cycles.
Protein Name	E3 ubiquitin-protein ligase Itchy homolog
Gene Name	ITCH
Cellular localization	Cell membrane ; Peripheral membrane protein ; Cytoplasmic side . Cytoplasm . Nucleus . Early endosome membrane ; Peripheral membrane protein ; Cytoplasmic side . Endosome membrane ; Peripheral membrane protein ; Cytoplasmic side . May be recruited to exos
Purification	The antibody was affinity-purified from rabbit antiserum by affinity-chromatography using epitope-specific immunogen.

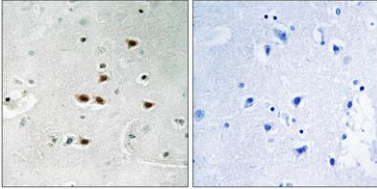
Clonality	Polyclonal
Concentration	1 mg/ml
Observed band	
Human Gene ID	83737
Human Swiss-Prot Number	Q96J02
Alternative Names	ITCH; E3 ubiquitin-protein ligase Itchy homolog; Itch; Atrophin-1-interacting protein 4; AIP4; NFE2-associated polypeptide 1; NAPP1

Background

itchy E3 ubiquitin protein ligase(ITCH) Homo sapiens This gene encodes a member of the Nedd4 family of HECT domain E3 ubiquitin ligases. HECT domain E3 ubiquitin ligases transfer ubiquitin from E2 ubiquitin-conjugating enzymes to protein substrates, thus targeting specific proteins for lysosomal degradation. The encoded protein plays a role in multiple cellular processes including erythroid and lymphoid cell differentiation and the regulation of immune responses. Mutations in this gene are a cause of syndromic multisystem autoimmune disease. Alternatively spliced transcript variants encoding multiple isoforms have been observed for this gene. [provided by RefSeq, Mar 2012],



Enzyme-Linked Immunosorbent Assay (Phospho-ELISA) for Immunogen Phosphopeptide (Phospho-left) and Non-Phosphopeptide (Phospho-right), using ITCH (Phospho-Tyr420) Antibody



Immunohistochemistry analysis of paraffin-embedded human brain, using ITCH (Phospho-Tyr420) Antibody. The picture on the right is blocked with the phospho peptide.